

JHK
T-SHIRT

 **LAURUS**
REKLÁMAJÁNDÉK
Sokoldalú. Egyedi.

2023

CATALOGUE

Purchase

ONLINE





A T-SHIRT TAILORED FOR THE PLANET

Our aim has always been to design clothes suitable for everyone. We are also aware of the need to protect the environment. In order to be able to move forward with our goal, we must look after the place where we live so that when you wear one of our garments, you feel right at home.

We ensure that all processes carried out on our products have the least impact on the planet and those who live on it. Year after year, we are increasing the percentage of Eco-friendly, organic and recycled fabrics in our catalogue while still using the highest quality raw materials in order to continue to feel very proud of our products.

SUSTAINABILITY IS NOT A PASSING FAD, BUT A LASTING RESPONSIBILITY FOR ALL OF US

At **JHK**, we are committed to launching sustainable and environmentally-friendly products in the market, as well as improving their quality to extend the product's life-cycle and chance of it being recycled. This is reflected in our work process, in the use of Eco-friendly, organic and recycled materials. We also look after our production processes to ensure we provide our clients with a better product and our workers with a better working environment.

We hope our product improvements contribute to making the world a better place.



ICONOGRAPHY



BOX

NUMBER OF GARMENTS PER BOX.



PACK

NUMBER OF GARMENTS PER PACK.



BAG

NUMBER OF GARMENTS PER BAG.



100% COTTON

100% NATURAL FIBER.



KING SIZE

AVAILABLE IN LARGE SIZES.



HEAT TRANSFER

GARMENT SUITABLE FOR TEXTILE TRANSFER.



EMBROIDERY

GARMENT SUITABLE FOR EMBROIDERY.



TEAR AWAY LABEL

THE LABEL CAN BE EASILY REMOVED.



SLIM FIT

SLIGHTLY FITTED.



SCREEN PRINTING

GARMENT SUITABLE FOR SCREEN PRINTING.



SUBLIMATION

GARMENT SUITABLE TO SUBLIMATE.



DIGITAL PRINTING

GARMENT SUITABLE FOR DIGITAL PRINTING.

Testing is recommended before handling large quantities to ensure that the machine settings are appropriate.

SMALL GESTURES THAT MAKE A DIFFERENCE

Because we love the place where we live and we want it to be a bit better every day, we are constantly committed to our environment. That's why we've been working for some time now on reducing our carbon footprint and thus contributing to protecting the environment, carrying out specific actions to this end.

At **JHK**, we have implemented a policy of reducing the use of plastic in both our packaging and boxes.

That's why, gradually, all our products will eventually arrive protected in a single bag inside each box, made from 100% recycled and recyclable plastics.



INDEX



OCEAN LINE

10



WINTER LINE

104



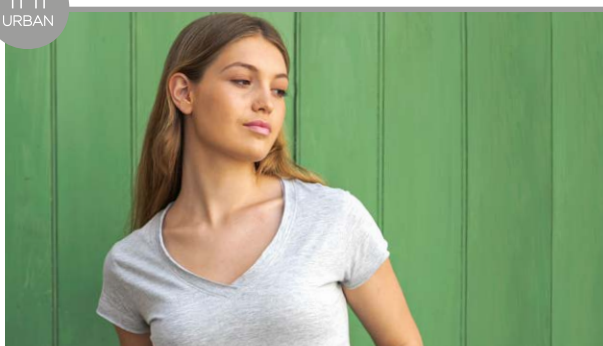
REGULAR LINE

18



URBAN LINE

142



SUBLI LINE

64



SPORT LINE

168



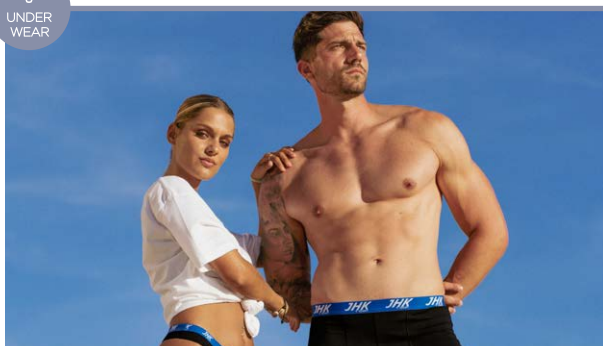
WORKWEAR LINE

68



UNDERWEAR LINE

180



new!

NOVELTIES

REGULAR LINE



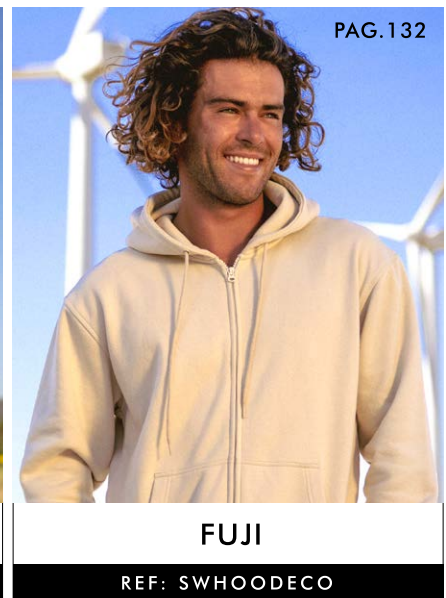
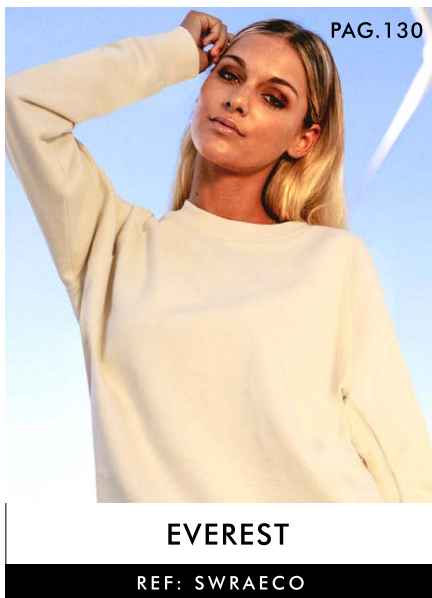
WORKWEAR LINE



URBAN LINE



WINTER LINE



A full-page photograph of a man and a young girl in a park. The man, on the left, has long curly hair, wears sunglasses, a white t-shirt, red shorts, white socks, and black sneakers. He has several tattoos, including 'ST' on his right leg and '8' on his left leg. The girl, on the right, has blonde hair and is wearing a white hoodie, white shorts, and grey sneakers. She is looking up at the man. The background shows palm trees and a playground under a clear blue sky.

JHK FOR EVERYONE

We know that no matter what your shape, size or style is, we'll have something that fits just right. A company that always gets the right cut and understands what it means to work...

"for everyone".



**JHK IS WELL
AWARE OF WHAT
IT MEANS TO SAY
“FOR EVERYONE”**



**EVERY SIZE,
EVERY AGE,
EVERY STYLE,
EVERY COLOUR,
EVERYTHING**



**WHOEVER AND
HOWEVER YOU ARE**

JHK
T-SHIRT





OCEAN LINE

Don't set limits
to yourself:
if you like it, use it.

Live it!



TSOCEAN



OCEAN T-SHIRT

REF: TSOCEAN



MEN'S SHORT SLEEVE T-SHIRT. TUBULAR FIT.
DOUBLE NEEDLE STITCHING IN COLLAR, SLEEVES
AND BOTTOM HEM FOR EXTRA DURABILITY.
SHOULDER-TO-SHOULDER TAPING.
1X1 RIBBED COLLAR WITH ELASTANE.
100% PRESHRUNK COTTON.
AY: 95% COTTON / 5% VISCOSE.
GM: 85% COTTON / 15% VISCOSE.

S / XXL

WH	AY	GM	GF	BK	SY	OR	RD
KG	LM	NY	DN	RB	TU	BU	

3XL

WH	GM	BK	RD	RB	NY

S • M • L • XL • XXL • 3XL
 48/69 50/70 53/73 56/75 58/77 61/78



100% COTTON



EMBROIDERY



TEAR AWAY LABEL



120



SCREEN PRINTING



120



HEAT TRANSFER

OCEAN POLO

REF: POLOCEAN



MEN'S SHORT SLEEVE POLO SHIRT.

PIQUÉ FABRIC.

TWO-BUTTON PLACKET WITH BOTTOM.

1X1 RIB ON COLLAR.

WITHOUT SIDE VENTS. ENZYME WASH.

175 G/M² APPROX.

100% PRESHRUNK COTTON.

GM: 85% COTTON / 15% VISCOSE.



100% COTTON



TEAR AWAY LABEL



SCREEN PRINTING



HEAT TRANSFER



EMBROIDERY



50



50



S • M • L • XL • XXL
50/68 52/70 54/72 56/74 60/78



UNISEX



OCEAN SPORT UNISEX

REF: SPORTOCEAN



HIGH PERFORMANCE UNISEX T-SHIRT.

SIDE-SEALED.

130 G/M² APPROX.

100% POLYESTER.



WH

GF

BK

RD

TU

RB

NY

Fluor



SYF

ORF

LMF



S • M • L • XL • XXL
50/66 52/68 54/70 56/72 58/77



TEAR AWAY LABEL



SCREEN PRINTING



HEAT TRANSFER



SUBLIMATION



50



50



OCEAN CREW NECK SWEATSHIRT

REF: SWOCECR



UNISEX SWEATSHIRT. DOUBLE NEEDLE COLLAR, CUFFS AND WAISTBAND FOR EXTRA DURABILITY. SELF-FABRIC CUFFS AND WAISTBAND.

260 - 265 G/M² APPROX.

65% POLYESTER / 35% COTTON.

AY: 67% COTTON / 31% POLYESTER / 2% VISCOSE.



XS • S • M • L • XL • XXL • 3XL
51/63 54/66 57/69 60/72 63/76 66/78 70/81



SCREEN PRINTING



HEAT TRANSFER



EMBROIDERY



25



25



UNISEX

OCEAN KANGAROO

REF: SWOCEKNG



UNISEX SWEATSHIRT.

DYED-TO-MATCH DRAWCORD.

POUCH POCKET FOR EXTRA CARRY.

SELF-FABRIC CUFFS AND WAISTBAND.

260 - 265 G/M² APPROX.

65% POLYESTER / 35% COTTON.

AY: 67% COTTON / 31% POLYESTER / 2% VISCOSE.



SCREEN PRINTING



HEAT TRANSFER



EMBROIDERY



25



25



XS 50/67

S 52/68

M 54/69

L 56/70

XL 58/71

XXL 60/72

3XL 62/74



OCEAN KANGAROO HOODED CONTRAST

REF: SWOCECTR



UNISEX SWEATSHIRT.

DYED-TO-MATCH DRAWCORD.

HOOD WITH CONTRAST LINING.

SELF-FABRIC CUFFS AND WAISTBAND.

POUCH POCKET FOR EXTRA CARRY.

260 - 265 G/M² APPROX.

65% POLYESTER / 35% COTTON.

AS: 67% COTTON / 31% POLYESTER / 2% VISCOSE.



WH/NY

AS/NY

BK/AS

RD/NY

PK/GM

NY/AS



XS • S • M • L • XL • XXL
50/67 52/68 54/69 56/70 58/71 60/72



UNISEX



SCREEN PRINTING



HEAT TRANSFER



EMBROIDERY



25



25





REGULAR LINE

Feeling good about
yourself is easy, basic
garments go with
everything.

Feel it!



TSRA150





MEN'S SHORT SLEEVE T-SHIRT.

TUBULAR FIT.

CM AND FLUOR SIDE-SEALED.

DOUBLE NEEDLE STITCHING IN SLEEVES AND BOTTOM

HEM FOR EXTRA DURABILITY.

SHOULDER-TO-SHOULDER TAPING.

1X1 RIB ON COLLAR.

155 G/M² APPROX. 100% PRESHRUNK COTTON.

AS: 98% COTTON / 2% VISCOSE.

GM: 85% COTTON / 15% VISCOSE.

FLUOR: 100% POLYESTER.



100% COTTON



TEAR AWAY LABEL



SCREEN PRINTING



HEAT TRANSFER



EMBROIDERY



100



100



PAG. 26
REF: TSRLCMF



PAG. 54
REF: TSRK150

REGULAR MAN T-SHIRT

REF: TSRA150



KING SIZE

REF: TSRA150KS



XS • S • M • L • XL • XXL • 3XL
48/68 51/70 53/72 56/74 58/76 61/78 66/82

4XL • 5XL
68/84 72/88



Neon

Fluor



REF: TSRA150WLT

T-Shirt 4 cm longer,
prepared for dyeing
Polyester yarn.



Heather

colors



REGULAR MAN T-SHIRT

REF: TSRA150



MEN'S SHORT SLEEVE T-SHIRT. SIDE-SEAMED.

DOUBLE NEEDLE STITCHING IN SLEEVES

AND BOTTOM HEM FOR EXTRA DURABILITY.

1X1 RIB ON COLLAR.

155 G/M² APPROX.

65% POLYESTER / 35% COTTON.

DNH: 60% COTTON / 40% POLYESTER.



XS • S • M • L • XL • XXL
48/68 51/70 53/72 56/74 58/76 61/78



TEAR AWAY LABEL



SCREEN PRINTING



HEAT TRANSFER



EMBROIDERY



100



100

REGULAR LADY COMFORT

REF: TSRLCMF



WOMEN'S FITTED SHORT SLEEVE T-SHIRT.

SIDE-SEAMED.

DOUBLE NEEDLE STITCHING IN SLEEVES

AND BOTTOM HEM FOR EXTRA DURABILITY.

145 G/M² APPROX.

65% POLYESTER / 35% COTTON.

DNH: 60% COTTON / 40% POLYESTER.



S • M • L • XL • XXL
42/60 44/62 46/64 48/66 50/68



TEAR AWAY LABEL



SCREEN PRINTING



HEAT TRANSFER



EMBROIDERY



100



100

REGULAR FIT T-SHIRT *new!*

REF: TSRO150FIT



MEN'S SHORT SLEEVE T-SHIRT.

TUBULAR FIT.

DOUBLE NEEDLE STITCHING IN SLEEVES AND

BOTTOM HEM FOR EXTRA DURABILITY.

SHOULDER-TO-SHOULDER TAPING.

1X1 RIB ON COLLAR.

155 G/M² APPROX. 100% PRESHRUNK COTTON.

AS: 98% COTTON / 2% VISCOSE.

GM: 85% COTTON / 15% VISCOSE.



100% COTTON



TEAR AWAY LABEL



SCREEN PRINTING



HEAT TRANSFER



EMBROIDERY



100



100

fit



S • M • L • XL • XXL • 3XL
48/69 50/70 53/73 56/75 58/77 61/79



WH

AS

GM

BK

SY

OR

RD

NY

RB

TSRO150FIT



TSRLCMF





WOMEN'S FITTED SHORT SLEEVE T-SHIRT.

SIDE-SEAMED.

DOUBLE NEEDLE STITCHING IN SLEEVES

AND BOTTOM HEM FOR EXTRA DURABILITY.

145 G/M² APPROX.

100% COTTON.

GM: 85% COTTON / 15% VISCOSE.

FLUOR: 100% POLYESTER.



100% COTTON



TEAR AWAY LABEL



SCREEN PRINTING



HEAT TRANSFER



EMBROIDERY



100



100



PAG. 20
REF: TSRA150



PAG. 54
REF: TSRK150

REGULAR LADY COMFORT

REF: TSRLCMF



CURVES SIZE*

REF: CURVS150



S • M • L • XL • XXL
42/60 44/62 46/64 48/66 50/68

S • M • L • XL
53/70 56/73 59/74 62/76



100

100

S / XXL



REF: TSRLCMFWLT
T-Shirt 4 cm longer, prepared for dyeing. Polyester yarn.



Fluor



CURVES SIZE*





WOMEN'S FITTED SHORT SLEEVE T-SHIRT.
DOUBLE NEEDLE STITCHING IN SLEEVES AND
BOTTOM HEM FOR EXTRA DURABILITY.
SINGLE JERSEY.
145 G/M² APPROX.
100% COTTON.
GM: 85% COTTON / 15% VISCOSE.
HEATHER: 65% POLYESTER / 35% COTTON.
DNH: 60% COTTON / 40% POLYESTER.



100% COTTON



TEAR AWAY LABEL



SCREEN PRINTING



HEAT TRANSFER



EMBROIDERY



100




100



PAG. 149
REF: TSUAPICO

REGULAR LADY COMFORT V-NECK

REF: TSRLCMFP

	CURVES SIZE*							
	S	M	L	XL	XXL			
	42/60	44/62	46/64	48/66	50/68			
	53/70	56/73	59/74	62/76				



CURVES SIZE*

REF: CURVSPICO



100



100

S / XXL



WH



GM



BK



RD



FU



PK



PU



TU



RB



NY



LM



CHCH



MUH



BUH



LVH



TUH



DNH



BGH

Heather colors

CURVES SIZE*



WH



GM



BK



RD



FU



TU



RB



NY



LM



TSRLCMFP





REGULAR COMBED T-SHIRT

REF: TSR160COMB



MEN'S SHORT SLEEVE T-SHIRT.

TUBULAR FIT.

DOUBLE NEEDLE STITCHING IN SLEEVES AND BOTTOM

HEM FOR EXTRA DURABILITY.

SHOULDER-TO-SHOULDER TAPING.

1X1 RIB ON COLLAR.

160 G/M² APPROX. 100% COMBED COTTON.

AS: 98% COTTON / 2% VISCOSE.

GM: 85% COTTON / 15% VISCOSE.



100% COTTON



TEAR AWAY LABEL



SCREEN PRINTING



HEAT TRANSFER



EMBROIDERY



100



100



S • M • L • XL • XXL • 3XL

48/68 51/70 53/72 56/74 58/76 61/78



WH



AS



GM



GF



BK



SY



OR



RD



BU



RB



NY



BG

REGULAR DIGITAL PRINT

REF: TSR160DGP



MEN'S SHORT SLEEVE T-SHIRT.

TUBULAR FIT.

DOUBLE NEEDLE STITCHING IN SLEEVES AND

BOTTOM HEM FOR EXTRA DURABILITY.

SHOULDER-TO-SHOULDER TAPING.

1X1 RIB ON COLLAR.

160 G/M² APPROX.

100% COMBED COTTON.



100% COTTON



TEAR AWAY LABEL



SCREEN PRINTING



HEAT TRANSFER



EMBROIDERY



DIGITAL PRINTING



100



100



WH

T-shirt treated
for digital printing.



S • M • L • XL • XXL • 3XL

48/68 51/70 53/72 56/74 58/76 61/78



REGULAR ORGANIC T-SHIRT

REF: TSR160ORG



MEN'S SHORT SLEEVE T-SHIRT.

TUBULAR FIT.

DOUBLE NEEDLE STITCHING IN SLEEVES AND

BOTTOM HEM FOR EXTRA DURABILITY.

SHOULDER-TO-SHOULDER TAPING.

1X1 RIB ON COLLAR.

160 G/M² APPROX.

100% COMBED COTTON.



WH



100% COTTON



BK



TEAR AWAY LABEL



SCREEN PRINTING



HEAT TRANSFER



EMBROIDERY



DIGITAL PRINTING



100



100

new!
colors



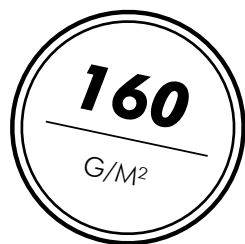
RD



NY



RB



S • M • L • XL • XXL • 3XL

48/68

51/70

53/72

56/74

58/76

61/78





100% COTTON



TEAR AWAY LABEL



SCREEN PRINTING



HEAT TRANSFER



EMBROIDERY



100



100

REGULAR LADY PREMIUM T-SHIRT

REF: TSRLPRM



WOMEN'S FITTED SHORT SLEEVE T-SHIRT.

SIDE-SEAMED.

DOUBLE NEEDLE STITCHING IN SLEEVES

AND BOTTOM HEM FOR EXTRA DURABILITY.

SINGLE JERSEY.

170 G/M² APPROX. 100% PRESHRUNK COTTON.

GM: 85% COTTON / 15% VISCOSE.



S • M • L • XL • XXL • 3XL

42/62 44/63 46/64 48/66 50/68 52/70

PFD 44/66 46/68 48/70 50/72 52/74 54/76



WH



GM



BK



RD



FU



RB



NY



KG



PFD

Prepared for dyeing

REGULAR HIT T-SHIRT

REF: TSRA170



MEN'S SHORT SLEEVE T-SHIRT.

TUBULAR FIT.

DOUBLE NEEDLE STITCHING IN SLEEVES AND

BOTTOM HEM FOR EXTRA DURABILITY.

SHOULDER-TO-SHOULDER TAPING.

1X1 RIB ON COLLAR.

170 G/M² APPROX. 100% PRESHRUNK COTTON.

AS: 98% COTTON / 2% VISCOSE.

GM: 85% COTTON / 15% VISCOSE.



100% COTTON



TEAR AWAY LABEL



SCREEN PRINTING



HEAT TRANSFER



EMBROIDERY



100



100



XS / 3XL



4XL / 5XL



XS • S • M • L • XL • XXL • 3XL
48/68 51/70 53/72 56/74 58/76 61/78 66/82



KING SIZE

REF: TSRA170KS

4XL • 5XL
68/84 72/88



TSRA190





MEN'S SHORT SLEEVE T-SHIRT.

TUBULAR FIT.

PFD SIDE - SEAMED.

DOUBLE NEEDLE STITCHING IN SLEEVES AND BOTTOM

HEM FOR EXTRA DURABILITY.

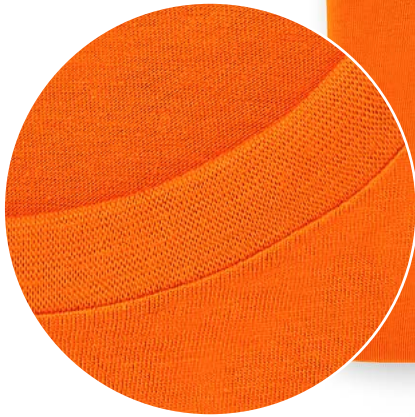
SHOULDER-TO-SHOULDER TAPING.

1X1 RIB ON COLLAR.

180 - 185 G/M² APPROX. 100% PRESHRUNK COTTON.

AS: 98% COTTON / 2% VISCOSE.

GM: 85% COTTON / 15% VISCOSE.



100% COTTON



TEAR AWAY LABEL



SCREEN PRINTING



HEAT TRANSFER



EMBROIDERY



100



100



PAG. 56
REF: TSRA190

REGULAR PREMIUM T-SHIRT

REF: TSRA190



XS • S • M • L • XL • XXL • 3XL
48/68 51/70 53/72 56/74 58/76 61/78 66/82

PFD 47/67 50/70 53/73 56/76 59/79 63/82 66/85



KING SIZE

REF: TSRA190KS

4XL • 5XL
68/84 72/88



50

50





100% COTTON



TEAR AWAY LABEL



SCREEN PRINTING



HEAT TRANSFER



EMBROIDERY



50



50



PAG. 59
REF: TSRA150LS

REGULAR LS T-SHIRT

REF: TSRA150LS

MEN'S LONG SLEEVE T-SHIRT.

DOUBLE NEEDLE STITCHING IN SLEEVES AND

BOTTOM HEM FOR EXTRA DURABILITY.

SHOULDER-TO-SHOULDER TAPING.

1X1 RIB ON COLLAR.

155 - 160 G/M² APPROX.

100% PRESHRUNK COTTON.

GM: 85% COTTON / 15% VISCOSE.



REGULAR LADY COMFORT LS

REF: TSRLCMFLS

WOMAN'S LONG SLEEVE T-SHIRT.

DOUBLE NEEDLE STITCHING IN SLEEVES AND

BOTTOM HEM FOR EXTRA DURABILITY.

SINGLE JERSEY.

145 G/M² APPROX.

100% PRESHRUNK COTTON.

GM: 85% COTTON / 15% VISCOSE.





100% COTTON



TEAR AWAY LABEL



SCREEN PRINTING



HEAT TRANSFER



EMBROIDERY



50



50

REGULAR HIT T-SHIRT LS

REF: TSRA170LS

MEN'S LONG SLEEVE T-SHIRT WITH CUFFS.

TUBULAR FIT.

DOUBLE NEEDLE STITCHING IN SLEEVES AND

BOTTOM HEM FOR EXTRA DURABILITY.

SHOULDER-TO-SHOULDER TAPING.

1X1 RIB ON COLLAR.

170 G/M² APPROX. 100% PRESHRUNK COTTON.

GM: 85% COTTON / 15% VISCOSE.



REGULAR LADY PREMIUM LS

REF: TSRLPRMLS

WOMEN'S LONG SLEEVE T-SHIRT WITH CUFFS.

TUBULAR FIT.

DOUBLE NEEDLE STITCHING IN SLEEVES AND BOTTOM

HEM FOR EXTRA DURABILITY.

SHOULDER-TO-SHOULDER TAPING.

1X1 RIBBED COLLAR.

170 G/M² APPROX. 100% PRESHRUNK COTTON.

GM: 85% COTTON / 15% VISCOSE.



XS • S • M • L • XL • XXL • 3XL
48/68 51/70 53/72 56/74 58/76 61/78 66/82



S • M • L • XL • XXL
42/60 44/62 46/64 48/66 50/68

PORA210





MEN'S SHORT SLEEVE POLO SHIRT.

PIQUÉ FABRIC.

BUTTONS IN THE SAME COLOR AS THE GARMENT.

TWO-BUTTON PLACKET WITH BOTTOM BOX-STITCH

REINFORCEMENT.

1X1 RIB ON COLLAR AND CUFFS.

SIDE VENTS. 210 G/M².

100% PRESHRUNK COMBED COTTON.

AS: 98% COTTON / 2% VISCOSE.

GM: 85% COTTON / 15% VISCOSE.



100% COTTON



TEAR AWAY LABEL



SCREEN PRINTING



HEAT TRANSFER



EMBROIDERY



50



50



PAG. 44
REF: POPL200



PAG. 60
REF: PKID210

REGULAR POLO MAN

REF: PORA210



KING SIZE

REF: PORA210KS



XS • S • M • L • XL • XXL • 3XL
47/68 51/70 53/72 55/74 59/76 63/80 65/82

4XL • 5XL
67/84 71/86





POLO WASH

REF: PORA210



MEN'S SHORT SLEEVE POLO SHIRT.

PIQUÉ FABRIC.

TWO-BUTTON PLACKET WITH BOTTOM BOX-

STITCH REINFORCEMENT.

1X1 RIB ON COLLAR AND CUFFS.

SIDE VENTS. 210 G/M².

100% PRESHRUNK COMBED COTTON.



XS • S • M • L • XL • XXL • 3XL

47/68 51/70 53/72 55/74 59/76 63/80 65/82



DGW



DBW



BUW



OLW



100% COTTON



TEAR AWAY LABEL



SCREEN PRINTING



HEAT TRANSFER



EMBROIDERY



50



50

❗ Each WASH polo is "unique". Polo of the same color can have different shades as they are tinted with natural pigments and that is what makes them unique. For this reason, we recommend washing the garment separately, since each wash may lose color and acquire that aged tone.

POLO CONTRAST

REF: PORA210



MEN'S SHORT SLEEVE POLO SHIRT.

PIQUÉ FABRIC. BUTTONS IN THE SAME COLOR AS THE GARMENT.

TWO-BUTTON PLACKET WITH BOTTOM BOX-STITCH REINFORCEMENT.

1X1 RIB ON COLLAR AND CUFFS.

SIDE VENTS.

210 G/M².

100% PRESHRUNK COMBED COTTON.

GM: 85% COTTON / 15% VISCOSE



XS • S • M • L • XL • XXL • 3XL
47/68 51/70 53/72 55/74 59/76 63/80 65/82



WH/NY



WH/KG



WH/RD



WH/BK



BK/WH



NY/WH



RD/WH



RB/WH



BG/WH



BU/WH



GM/WH



100% COTTON



TEAR AWAY LABEL



SCREEN PRINTING



HEAT TRANSFER



EMBROIDERY



50



50



PAG. 60
REF: PKID210

POLO PREMIUM *new!*

REF: PORA240



MEN'S SHORT SLEEVE POLO SHIRT
PIQUÉ FABRIC.
BUTTONS IN THE SAME COLOR AS THE GARMENT.
TWO-BUTTON PLACKET WITH BOTTOM BOX-
STITCH REINFORCEMENT.
1X1 RIB ON COLLAR AND CUFFS.
SIDE VENTS. 240 G/M².
100% PRESHRUNK COMBED COTTON.
GM: 85% COTTON / 15% VISCOSE.



100% COTTON



TEAR AWAY LABEL



SCREEN PRINTING



HEAT TRANSFER



EMBROIDERY



50



50



XS • S • M • L • XL • XXL • 3XL

47/68 51/70 53/72 55/74 59/76 63/80 65/82







WOMAN'S FITTED SHORT SLEEVE POLO SHIRT.

PIQUÉ FABRIC. BUTTONS IN THE SAME COLOR

AS THE GARMENT. THREE-BUTTON PLACKET

WITH BOTTOM BOX-STITCH REINFORCEMENT.

1X1 RIB ON COLLAR AND CUFFS.

SIDE VENTS.

200 G/M².

100% PRESHRUNK COMBED COTTON.

AS: 98% COTTON / 2% VISCOSE.

GM: 85% COTTON / 15% VISCOSE.



100% COTTON



TEAR AWAY LABEL



SCREEN PRINTING



HEAT TRANSFER



EMBROIDERY



50



50



PAG. 38
REF: PORA210



PAG. 60
REF: PKID210

REGULAR POLO LADY

REF: POPL200



CURVES SIZE*

REF: CURVSPOLO



S • M • L • XL • XXL • 3XL
42/61 44/63 46/65 48/67 50/69 54/73

S • M • L • XL
56/73 58/73 60/75 62/75

S / XXL



3XL



CURVES SIZE*



POPL200



REGULAR POLO MAN LS

REF: PORA210LS



MEN'S LONG SLEEVE POLO SHIRT.
PIQUÉ FABRIC. BUTTONS IN THE SAME COLOR AS THE GARMENT.
TWO-BUTTON PLACKET WITH BOTTOM BOX-STITCH
REINFORCEMENT.
SIDE VENTS.
210 G/M².
100% PRESHRUNK COMBED COTTON.
GM: 85% COTTON / 15% VISCOSE.

S / XXL



XS / 5XL



100% COTTON



TEAR AWAY LABEL



SCREEN PRINTING



HEAT TRANSFER



EMBROIDERY



50



50



KING SIZE

REF: PORA210LKS



XS • S • M • L • XL • XXL • 3XL*
47/68 51/70 53/72 55/74 59/76 63/80 65/82

4XL • 5XL
67/84 71/86



25

25

3XL*



25

25

REGULAR POLO LADY LS

REF: POPL200LS



WOMAN'S FITTED LONG SLEEVE POLO SHIRT.

PIQUÉ FABRIC. BUTTONS IN THE SAME COLOR

AS THE GARMENT. THREE-BUTTON PLACKET WITH

BOTTOM BOX-STITCH REINFORCEMENT.

SIDE VENTS.

200 G/M².

100% PRESHRUNK COMBED COTTON.

GM: 85% COTTON / 15% VISCOSE.



XS 40/59

S 42/61

M 44/63

L 46/65

XL 48/67

XXL 50/69

3XL 54/73



100% COTTON



TEAR AWAY LABEL



SCREEN PRINTING



HEAT TRANSFER



EMBROIDERY



50



50



PAG. 63
REF: PKID210LS

A close-up photograph of a baby sitting on a colorful, curved slide. The baby is wearing a pink short-sleeved shirt and a wide-brimmed hat with horizontal stripes in shades of pink, white, and grey. The hat has two small pom-poms on top. The baby is looking directly at the camera with a neutral expression. The slide they are sitting on has vibrant colors including yellow, orange, and red. The word "BABY" is overlaid in large, white, outlined capital letters across the center of the image.

BABY

BABY BODY

REF: TSRBBODY



BABY 'S SHORT SLEEVE BODY.

SNAP FASTENERS IN SHOULDER AND BOTTOM HEM.

1X1 RIB ON COLLAR.

170 G/M².

100% COTTON.

GM: 85% COTTON / 15% VISCOSE.



3M • 6M • 9M • 12M • 18M
20/38 22/40 24/42 26/44 28/46



100% COTTON



TEAR AWAY LABEL



SCREEN PRINTING



HEAT TRANSFER



EMBROIDERY



50



50





SINGLE JERSEY BABY BODY

REF: TSRBODY150



BABY 'S SHORT SLEEVE BODY.

SNAP FASTENERS IN SHOULDER AND BOTTOM

HEM.

SINGLE JERSEY.

145 G/M².

100% COTTON.

GM: 85% COTTON / 15% VISCOSE.



100% COTTON



TEAR AWAY LABEL



SCREEN PRINTING



HEAT TRANSFER



EMBROIDERY



50



50



3M • 6M • 9M • 12M • 18M
20/38 22/40 24/42 26/44 28/46



WH



GM



BK



LY



OR



RD



AL



PK



SK



RB



NY

BABY PLAYSUIT

REF: TSRBSUIT



BABY PLAYSUIT.

SNAP FASTENERS IN SHOULDER AND BOTTOM

HEM.

1X1 RIB ON COLLAR.

170 G/M².

100% COTTON.

GM: 85% COTTON / 15% VISCOSE.



100% COTTON



TEAR AWAY LABEL



SCREEN PRINTING



HEAT TRANSFER



EMBROIDERY



50



50



3M • 6M • 9M • 12M • 18M
23/41 24/44 25/46 26/48 28/50



WH



GM



BK



PK



SK





BABY BODY LS

REF: TSRBBODYLS



BABY'S LONG SLEEVE BODY.

SNAP FASTENERS IN SHOULDER AND BOTTOM HEM.

1X1 RIB ON COLLAR.

170 G/M².

100% COTTON.

GM: 85% COTTON / 15% VISCOSE.



3M • 6M • 9M • 12M • 18M
20/38 22/40 24/42 26/44 28/46



100% COTTON



HEAT TRANSFER



TEAR AWAY LABEL



50



SCREEN PRINTING



50



EMBROIDERY



BABY T-SHIRT

REF: TSRB150



BABY'S SHORT SLEEVE T-SHIRT.

SIDE-SEAMED.

SHOULDER-TO-SHOULDER TAPING.

1X1 RIB ON COLLAR.

2 SHOULDER BUTTONS IN SIZE 0.

155 G/M².

100% PRESHRUNK COTTON.

GM: 85% COTTON / 15% VISCOSE.



0 • 1 • 2
23/34 25/35 30/37



100% COTTON



TEAR AWAY LABEL



SCREEN PRINTING



HEAT TRANSFER



EMBROIDERY



100



100





KIDS

TSRK150





KID T-SHIRT

REF: TSRK150



KID 'S SHORT SLEEVE T-SHIRT.

SIDE-SEAMED.

DOUBLE NEEDLE STITCHING IN SLEEVES

AND BOTTOM HEM FOR EXTRA DURABILITY.

SHOULDER-TO-SHOULDER TAPING.

1X1 RIB ON COLLAR.

155 G/M² APPROX.

100% PRESHRUNK COTTON

AS: 98% COTTON / 2% VISCOSE

GM: 85% COTTON / 15% VISCOSE



100% COTTON



TEAR AWAY LABEL



SCREEN PRINTING



HEAT TRANSFER



EMBROIDERY



100



100



PAG. 20
REF: TSRA150



PAG. 26
REF: TSRLCMF



3/4 • 5/6 • 7/8 • 9/11 • 12/14
32/44 35/49 38/52 41/58 43/61



REF: TSRK150WLT
T-Shirt 3 cm longer, prepared
for dyeing.
Polyester yarn.



KID PREMIUM T-SHIRT

REF: TSRK190



KID'S SHORT SLEEVE T-SHIRT.

SIDE-SEAMED.

DOUBLE NEEDLE STITCHING IN

SLEEVES AND BOTTOM HEM FOR EXTRA DURABILITY.

SHOULDER-TO-SHOULDER TAPING.

1X1 RIB ON COLLAR. 190 G/M² APPROX.

100% PRESHRUNK COTTON.

AS: 98% COTTON / 2% VISCOSE.

GM: 85% COTTON / 15% VISCOSE.



PFD
Prepared for dyeing



3/4	•	5/6	•	7/8	•	9/11	•	12/14
32/44		35/49		38/52		41/58		43/61

PFD	33/45	36/51	39/54	42/60	45/64
-----	-------	-------	-------	-------	-------



PAG. 34
REF: TSRA190



100% COTTON



TEAR AWAY LABEL



SCREEN PRINTING



HEAT TRANSFER



EMBROIDERY



100



100

KID TONGA

REF: TSLKTN



KID'S FITTED SHORT SLEEVE T-SHIRT.

1X1 RIB ON COLLAR.

SINGLE JERSEY.

155 G/M² APPROX.

100% COTTON.

GM: 85% COTTON / 15% VISCOSE.



100% COTTON



TEAR AWAY LABEL



SCREEN PRINTING



HEAT TRANSFER



EMBROIDERY



100



100



3/4 • 5/6 • 7/8 • 9/11 • 12/14
30/42 32/45 34/48 36/51 38/54





KID STRAP

REF: TSRKSTRAP



KID'S TANK TOP

DOUBLE NEEDLE STITCHING IN COLLAR, SLEEVES AND
BOTTOM HEM FOR EXTRA DURABILITY.

SELF-FABRIC COLLAR.

155 G/M² APPROX. 100% PRESHUNK COTTON.

GM: 85% COTTON / 15% VISCOSE.



100% COTTON



TEAR AWAY LABEL



SCREEN PRINTING



HEAT TRANSFER



EMBROIDERY



100



100



3/4 • 5/6 • 7/8 • 9/11 • 12/14

32/44 35/49 38/52 41/58 43/61



WH



GM



BK



RD



RB



NY



PAG. 153
REF: TSUASTRPM

KID TUVALU

REF: TSLKTVL



KID'S TANK TOP

1X1 RIB ON COLLAR.

2X1 RIB BACK PLEAT.

170 G/M² APPROX.

100% COTTON.



100% COTTON



TEAR AWAY LABEL



SCREEN PRINTING



HEAT TRANSFER



EMBROIDERY



100



100



3/4 • 5/6 • 7/8 • 9/11 • 12/14

26/42 28/44 30/47 32/50 34/56



WH



BK



LY



SY



OR



RD



FU



AL



PK



SK



AQ



NY



LM



KID T-SHIRT LS

REF: TSRK150LS



KID'S LONG SLEEVE T-SHIRT. SIDE-SEAMED.
DOUBLE NEEDLE STITCHING IN SLEEVES AND
BOTTOM HEM FOR EXTRA DURABILITY.
SHOULDER-TO-SHOULDER TAPING.
1X1 RIB ON COLLAR.
155 - 160 G/M² APPROX.
100% PRESHRUNK COTTON.
GM: 85% COTTON / 15% VISCOSE.



100% COTTON



TEAR AWAY LABEL



SCREEN PRINTING



HEAT TRANSFER



EMBROIDERY



100



100



PAG. 36
REF: TSRA150LS



PAG. 36
REF: TSRLCMFLS

1/2



3/4 - 12/14



1/2 • 3/4 • 5/6 • 7/8 • 9/11 • 12/14
29/39 32/44 35/49 38/52 41/58 43/61



PKID210



KID POLO

REF: PKID210



KID'S SHORT SLEEVE POLO SHIRT

PIQUÉ FABRIC. BUTTONS COLOUR SAME COLOUR

POLO SHIRT. TWO-BUTTON PLACKET WITH BOTTOM

BOX-STITCH REINFORCEMENT.

1X1 RIB ON COLLAR AND CUFFS.

SIDE VENTS.

210 G/M² APPROX.

100% PRESHRUNK COMBED COTTON.

GM: 85% COTTON / 15% VISCOSE.



1/2	•	3/4	•	5/6	•	7/8	•	9/11	•	12/14
30/39		33/42		37/46		39/51		42/57		44/64



100% COTTON



TEAR AWAY LABEL



SCREEN PRINTING



HEAT TRANSFER



EMBROIDERY



50



50



PAG. 38
REF: PORA210



PAG. 44
REF: POPL200

1/2



CONTRAST (1/2 - 12/14)



3/4 - 12/14



KID POLO SCHOOL WEAR

REF: PKID210SCH



KID'S SHORT SLEEVE POLO SHIRT.

PIQUÉ FABRIC.

TWO-BUTTON PLACKET WITH BOTTOM

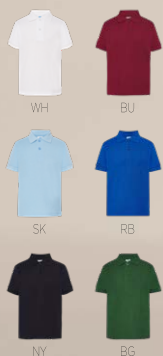
BOX-STITCH REINFORCEMENT.

1X1 RIB ON COLLAR AND CUFFS.

SIDE VENTS.

210 G/M² APPROX.

65% POLYESTER / 35% COTTON.



1/2 30/39

3/4 33/42

5/6 37/46

7/8 39/51

9/11 42/57

12/14 44/64



100% COTTON



TEAR AWAY LABEL



SCREEN PRINTING



HEAT TRANSFER



EMBROIDERY



50



50



100% COTTON



TEAR AWAY LABEL



SCREEN PRINTING



HEAT TRANSFER



EMBROIDERY



50



50



PAG. 46
REF: PORL210LS



PAG. 47
REF: POPA200LS

KID POLO LS

REF: PKID210LS



KID'S LONG SLEEVE POLO SHIRT.

PIQUÉ FABRIC.

TWO-BUTTON PLACKET WITH BOTTOM BOX-STITCH

REINFORCEMENT.

1X1 RIB ON COLLAR.

SIDE VENTS.

210 G/M² APPROX.

100% PRESHRUNK COMBED COTTON.



1/2	•	3/4	•	5/6	•	7/8	•	9/11	•	12/14
30/39		33/42		37/46		39/51		42/57		44/64



WH



GF



BK



RD



BU



SK



RB



NY



FG





SUBLI LINE

Make our garments your
canvas and show it
to the world.

Live it!





SUBLI MAN T-SHIRT

REF: SBTSMAN



MEN'S SHORT SLEEVE T-SHIRT.

DOUBLE NEEDLE STITCHING IN SLEEVES AND
BOTTOM HEM FOR EXTRA DURABILITY.

150 G/M².

100% POLYESTER.



WHSB
SUBLIMATABLE



TEAR AWAY LABEL



EMBROIDERY



SUBLIMATION



100



100



XS • S • M • L • XL • XXL • 3XL
46/66 48/68 51/70 53/72 56/74 58/76 61/78

SUBLI LADY COMFORT

REF: SBTSLCMF



WOMEN'S SHORT SLEEVE T-SHIRT.

DOUBLE NEEDLE STITCHING IN SLEEVES AND
BOTTOM HEM FOR EXTRA DURABILITY.

150 G/M².

100% POLYESTER.



WHSB
SUBLIMATABLE



TEAR AWAY LABEL



EMBROIDERY



SUBLIMATION



100



100



S • M • L • XL • XXL • 3XL
42/60 44/62 46/64 48/66 50/68 52/70



SUBLI TOP V-NECK

REF: SBTSLPICO



WOMEN'S FITTED TANK TOP.

V-NECK.

SINGLE JERSEY.

150 G/M².

100% POLYESTER.



S • M • L • XL • XXL
40/63 42/65 44/67 46/69 48/71



WHSB
SUBLIMATABLE



TEAR AWAY LABEL



EMBROIDERY



SUBLIMATION



50



50



SUBLI BURN OUT

REF: SBTSLBOT



WOMEN'S SHORT SLEEVE T-SHIRT. COTTON BURN.

DOUBLE NEEDLE STITCHING IN SLEEVES AND

BOTTOM HEM FOR EXTRA DURABILITY.

UNFINISHED COLLAR.

120 - 125 G/M² APPROX.

60% COTTON / 40% POLYESTER.



S • M • L • XL
48/66 50/68 52/70 54/72



WHSB
SUBLIMATABLE



TEAR AWAY LABEL



EMBROIDERY



SUBLIMATION



50



50



SUBLI KID T-SHIRT

REF: SBTSKID



KID'S SHORT SLEEVE T-SHIRT.

DOUBLE NEEDLE STITCHING IN SLEEVES AND

BOTTOM HEM FOR EXTRA DURABILITY.

150 G/M².

100% POLYESTER.



WHSB
SUBLIMATABLE



TEAR AWAY LABEL



EMBROIDERY



SUBLIMATION



100



100



3/4 • 5/6 • 7/8 • 9/11 • 12/14
32/44 35/49 38/52 41/58 43/61







WORKWEAR LINE

Comfort and protection to
make the effort worthwhile.

Feel it!





PARIS / PARIS KID

REF: WKPARIS / REF: WKPARISK



APRON UNISEX FOR ADULT AND KIDS.

ADJUSTABLE NECK STRAP WITH SLIDING PLASTIC BUCKLE.

TWO WAIST STRAPS.

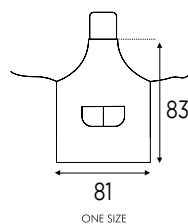
LARGE FRONT DOUBLE POCKET.

180 G/M².

65% POLYESTER / 35% COTTON.

DNV: 100% COTTON / 220 G/M².

ADULT REF: WKPARIS



UNISEX



TEAR AWAY LABEL



SCREEN PRINTING



HEAT TRANSFER

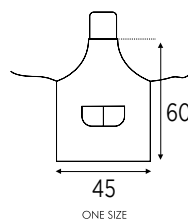


EMBROIDERY



50

KID REF: WKPARISK*



* **REF: WKPARISK** – Not work wear, but for workshops, crafts courses and other children's activities.

VIENNA

REF: WKVIENNA



ADULT HALF APRON UNISEX.

TWO BACK STRAPS TO TIE.

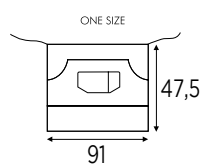
KANGAROO POCKET AND 1 POCKET WITH

DOUBLE OPENING.

180 G/M².

65% POLYESTER / 35% COTTON.

DNV: 100% COTTON / 220 G/M².



VENICE

REF: WKVENICE



ADULT MINI APRON UNISEX.

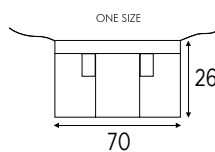
TWO BACK STRAPS TO TIE.

3 WIDE POCKETS AND 2 NARROW ONES.

180 G/M² APPROX.

65% POLYESTER / 35% COTTON.

DNV: 100% COTTON / 220 G/M².



OPORTO

REF: WKOPORTO



UNISEX SCRUB TOP V-NECK.

SINGLE STITCH AT SLEEVE AND BOTTOM HEMS.

ONE CHEST POCKET, LEFT SIDE.

TWO POCKETS AT BOTTOM.

HALF MOON AT BACK NECK. SIDE SLIT.

170 G/M².

65% POLYESTER / 35% COTTON.

	XS	•	S	•	M	•	L	•	XL	•	XXL	•	3XL
	57/72		60/73		63/74		66/75		69/76		72/77		75/78



UNISEX



TEAR AWAY LABEL



SCREEN PRINTING



HEAT TRANSFER



EMBROIDERY



1



50



WH



AZ



EM

LISBON

REF: WKLISBON



UNISEX SCRUB BOTTOM TROUSERS.

ELASTIC WAISTBAND WITH FRONT BUTTON AND FLY

ZIPPER CLOSURE.

BACK POCKET RIGHT SIDE ONCE WORN.

170 G/M².

65% POLYESTER / 35% COTTON.



UNISEX



TEAR AWAY LABEL



SCREEN PRINTING



HEAT TRANSFER



EMBROIDERY



1



50



WH



AZ



EM

	XS	•	S	•	M	•	L	•	XL	•	XXL	•	3XL
	46/100		48/102		50/104		52/106		54/108		56/110		58/112



U N I S E X





ROME / ROME LADY

REF: WKROME / REF: WKROMEL



MAN AND LADY LABCOAT. V-NECK CLOSURE.

CHEST POCKET AT LEFT SIDE ONCE WORN AND 2 FRONT

POCKETS AT BOTTOM.

5 FRONT BUTTONS, MATCHING COLOUR.

BACK BELT IN SELF FABRIC.

190 G/M².

65% POLYESTER / 35% COTTON.



TEAR AWAY LABEL



SCREEN PRINTING



HEAT TRANSFER



EMBROIDERY



1



25



WH



AZ



EM



MAN

REF: WKROME



S • M • L • XL • XXL • 3XL
52/98 57/100 62/102 67/104 72/106 77/108



LADY

REF: WKROMEL



XS • S • M • L • XL • XXL
47/86 50/88 54/90 58/92 62/94 66/96



U N I S E X



SIENNA

REF: WKSIENNA



UNISEX LABCOAT.

V-NECK CLOSURE.

CHEST POCKET AT LEFT SIDE ONCE WORN AND 2

FRONT POCKETS AT BOTTOM.

5 FRONT BUTTONS, MATCHING COLOUR.

160 G/M² APROX.

65% POLYESTER / 35% COTTON.



TEAR AWAY LABEL



SCREEN PRINTING



HEAT TRANSFER



EMBROIDERY



1



25



WH



AZ



EM



XS • S • M • L • XL • XXL • 3XL
48/96 52/98 57/100 62/102 67/104 72/106 77/108



POLO WORKER



MEN'S AND LADY'S SHORT SLEEVE POLO SHIRT. PIQUÉ FABRIC.

PLACKET WITH BOTTOM BOX-STITCH REINFORCEMENT.

BUTTONS COLOUR SAME COLOUR POLO SHIRT.

1X1 RIB ON COLLAR AND CUFFS.

SIDE VENTS.

MEN: TWO-BUTTON PLACKET. 210 G/M² APPROX.

LADY: THREE-BUTTON PLACKET. 200 G/M² APPROX.

65% POLYESTER / 35% COTTON.

GM: 85% COTTON / 15% VISCOSE.



TEAR AWAY LABEL



SCREEN PRINTING



HEAT TRANSFER



EMBROIDERY



50



50



POLO WORKER 210

REF: PORA210WK



S • M • L • XL • XXL • 3XL
52/70 54/72 56/74 60/76 64/82 66/88



KING SIZE

REF: PORAWKKS

4XL • 5XL
72/92 76/96



WH



BK



RB



NY



WH



GM



BK



RD



BU



SK



RB



NY



KG



BG



POLO WORKER LADY

REF: POPL200WK



S • M • L • XL • XXL • 3XL
42/61 44/63 46/65 48/67 50/69 54/73



WH



GM



BK



RD



BU



SK



RB



NY



KG



BG

OSLO

OIL AND WATER REPELLENT SHIRT



MODEL	LADY AND MAN OSLO SHIRT.
AVAILABILITY	LONG AND SHORT SLEEVE SHIRT.
DESCRIPTION	BODY FITTED. BUTTONS COLOUR SAME COLOUR SHIRT. PLACKET IN SLEEVES. ONE BUTTON PLACKET AND ONE PLEAT IN THE SLEEVE. TWO BUTTONS CUFFS.
FABRIC	POPLIN.
COMPOSITION	65% POLYESTER / 35% COTTON.



SCREEN PRINTING



HEAT TRANSFER



EMBROIDERY



1



25



MAN

OSLO / OSLO SS

Collar size 38 39 42 43 46 48 50



S • M • L • XL • XXL • 3XL • 4XL
53/79 56/80 58/81 63/82 68/83 73/84 78/85



LADY

OSLO LADY / OSLO LADY SS

Collar size 34 36 37 38 39 41 42



S • M • L • XL • XXL • 3XL • 4XL
46/63 49/65 52/67 54/68 58/69 62/70 66/71

REF: SHAOSLO



REF: SHAOSLOSS



REF: SHLOSLO



REF: SHLOSLOSS



REF: SHAOSLO



REF: SHLOSLO



REF: SHAOSLOSS



REF: SHLOSLOSS



PEKIN

WRINKE FREE+ANTIBACTERIAL SHIRT



MODEL	LADY AND MAN PEKIN SHIRT.
AVAILABILITY	LONG AND SHORT SLEEVE.
DESCRIPTION	BODY FITTED. BUTTONS COLOUR SAME COLOUR SHIRT. PLACKET IN SLEEVES. ONE BUTTON PLACKET AND ONE PLEAT IN THE SLEEVE. TWO BUTTONS CUFFS.
FABRIC	POPLIN.
COMPOSITION	65% POLYESTER / 35% COTTON.



SCREEN PRINTING



HEAT TRANSFER



EMBROIDERY



1



25



*Do not use softener as it will remove the treatment.



PEKIN / PEKIN SS

MAN

Collar size 38 39 42 43 46 48 50



S • M • L • XL • XXL • 3XL • 4XL
53/79 56/80 58/81 63/82 68/83 73/84 78/85



PEKIN LADY / PEKIN LADY SS

LADY

Collar size 34 36 37 38 39 41 42



S • M • L • XL • XXL • 3XL • 4XL
46/63 49/65 52/67 54/68 58/69 62/70 66/71

REF: SHAPEKIN



WH



BK

REF: SHAPEKINSS



WH



BK

REF: SHLPEKIN



WH



BK

REF: SHLPEKINSS



WH



BK

REF: SHAPEKIN



REF: SHLPEKIN



REF: SHAPEKINSS



REF: SHLPEKINSS



OXFORD

CASUAL & BUSINESS SHIRT



MODEL	LADY AND MAN OXFORD SHIRT.
AVAILABILITY	LONG AND SHORT SLEEVE.
DESCRIPTION	<p>MAN: POCKET ON THE LEFT SIDE AND BUTTONS ON THE NECK.</p> <p>BUTTONS COLOUR SAME COLOUR SHIRT.</p> <p>LADY: BODY FITTED. BUTTONS COLOUR SAME COLOUR SHIRT.</p>
FABRIC	OXFORD
COMPOSITION	<p>60% COTTON / 40% POLYESTER.</p> <p>DG / GR / DB: 70% COTTON / 30% POLYESTER.</p> <p>BU: 68% RAYON / 32% POLYESTER.</p>



SCREEN PRINTING



HEAT TRANSFER



EMBROIDERY



1



25



CASUAL & BUSINESS

MAN

Collar size 38 39 42 43 46 48 50



S • M • L • XL • XXL • 3XL • 4XL

53/79 56/80 58/81 63/82 68/83 73/84 78/85

REF: SHAOXF



WH

SK

RB

SL

new!
colors



BU

DG

GR

DB

Heathers

REF: SHAOXFSS



WH

SK

RB

SL



LADY CASUAL & BUSINESS

LADY

Collar size 34 36 37 38 39 41 42



XS • S • M • L • XL • XXL • 3XL

46/63 49/65 52/67 54/68 58/69 62/70 66/71

REF: SHLOXF



WH

SK

RB

SL

new!
colors



BU

DG

GR

DB

Heathers

REF: SHLOXFSS



WH

SK

RB

SL

REF: SHAOXF



REF: SHLOXF



REF: SHLOXFSS



REF: SHAOXFSS



POPLIN

CASUAL & BUSINESS SHIRT



MODEL	LADY AND MAN POPLIN SHIRT.
AVAILABILITY	LONG AND SHORT SLEEVE.
DESCRIPTION	<p>MAN: POCKET ON THE LEFT SIDE AND BUTTONS ON THE NECK.</p> <p>BUTTONS COLOUR SAME COLOUR SHIRT.</p> <p>LADY: BODY FITTED. BUTTONS COLOUR SAME COLOUR SHIRT.</p>
FABRIC	POPLIN.
COMPOSITION	65% POLYESTER / 35% COTTON



SCREEN PRINTING



HEAT TRANSFER



EMBROIDERY



1



25



CASUAL & BUSINESS

MAN

Collar size 38 39 42 43 46 48 50

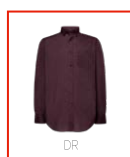


S • M • L • XL • XXL • 3XL • 4XL
53/79 56/80 58/81 63/82 68/83 73/84 78/85

REF: SHAPOP



new!
color



LADY CASUAL & BUSINESS

LADY

Collar size 34 36 37 38 39 41 42



XS • S • M • L • XL • XXL • 3XL
46/63 49/65 52/67 54/68 58/69 62/70 66/71

REF: SHLPOP



new!
color



REF: SHAPOPSS



REF: SHLPOPSS





REF: SHAPOP



REF: SHLPOP



REF: SHLPOPSS



REF: SHAPOPSS



MILAN

REF: SHAMILAN



MODEL	CASUAL SHIRT FIL A FIL.
AVAILABILITY	LONG SLEEVE.
DESCRIPTION	<p>FIL A FIL SHIRT (A TYPE OF FABRIC BY THE</p> <p>ALTERNATION OF TWO COLOURS OF YARN).</p> <p>SEMI CUTAWAY COLLAR. NO CHEST POCKET.</p>
COMPOSITION	65% POLYESTER / 35% COTTON YARN-DYED.



SK



SCREEN PRINTING



HEAT TRANSFER



EMBROIDERY



1



25

Collar size 37 38 39 42 43 46 48



XS • S • M • L • XL • XXL • 3XL
51/79 53/79 56/80 58/81 63/82 68/83 73/84

BERLIN

REF: SHABERLIN



MODEL	STRIPE CASUAL SHIRT.
AVAILABILITY	LONG SLEEVE.
DESCRIPTION	MEN'S BLUE STRIPE SHIRT. SEMI CUTAWAY COLLAR. NO CHEST POCKET. EASY IRON.
COMPOSITION	65% POLIÉSTER / 35% ALGODÓN YARN DYED.



SK



SCREEN PRINTING



HEAT TRANSFER



EMBROIDERY



1



25

Collar size 37 38 39 42 43 46 48



XS • S • M • L • XL • XXL • 3XL
51/79 53/79 56/80 58/81 63/82 68/83 73/84



LONDON

REF: SHALONDON



MODEL	CHECK CASUAL SHIRT.
AVAILABILITY	LONG SLEEVE.
DESCRIPTION	MEN'S CHECK SHIRT. SEMI CUTAWAY COLLAR. NO CHEST POCKET. EASY IRON.
COMPOSITION	65% POLYESTER / 35% COTTON YARN-DYED.



SK

- SCREEN PRINTING
- HEAT TRANSFER
- EMBROIDERY
- 1
- 25

Collar size	37	38	39	42	43	46	48
	XS	S	M	L	XL	XXL	3XL
A/B	51/79	53/79	56/80	58/81	63/82	68/83	73/84





MONACO

REF: SHAMONACO



MODEL	DENIM CASUAL SHIRT.
AVAILABILITY	LONG SLEEVE.
DESCRIPTION	MEN'S DENIM SHIRT. SEMI CUTAWAY COLLAR. NO CHEST POCKET. EASY IRON.
COMPOSITION	65% POLYESTER / 35% COTTON YARN-DYED.



DN



SCREEN PRINTING



HEAT TRANSFER



EMBROIDERY



1



25

Collar size 37 38 39 42 43 46 48



XS • S • M • L • XL • XXL • 3XL
51/79 53/79 56/80 58/81 63/82 68/83 73/84

TEXAS *new!*

REF: SHATEXAS

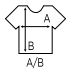


MODEL	DENIM CASUAL SHIRT
AVAILABILITY	LONG SLEEVE
DESCRIPTION	DENIM SHIRT. SEMI CUTAWAY COLLAR. POCKET IN THE LEFT SIDE. EASY IRON.
COMPOSITION	100% COTTON DENIM



DNV

-  SCREEN PRINTING
-  HEAT TRANSFER
-  EMBROIDERY
-  1
-  25

Collar size	37	38	39	42	43	46	48	50
	XS	S	M	L	XL	XXL	3XL	4XL
A/B	51/79	53/79	56/80	58/81	63/82	68/83	73/84	78/85





TEXAS LADY *new!*

REF: SHLTEXAS



MODEL	DENIM CASUAL SHIRT
AVAILABILITY	LONG SLEEVE
DESCRIPTION	DENIM SHIRT. SEMI CUTAWAY COLLAR. POCKET IN THE LEFT SIDE. EASY IRON.
COMPOSITION	100% COTTON DENIM



DNV



SCREEN PRINTING



HEAT TRANSFER



EMBROIDERY



1



25

Collar size 34 36 37 38 39 41 42



XS • S • M • L • XL • XXL • 3XL

46/63 49/65 52/67 54/68 58/69 62/70 66/71

ARIZONA

CARGO PANTS



CARGO PANTS.

WAISTBAND WITH SIDE ELASTIC BANDS AND CLOSURE

WITH A BUTTON. TWO SEAMED POCKETS AT FRONT.

ONE PATCH GUSSET FLAP POCKET AT SIDE SEAM WITH
VELCRO CLOSURE, RIGHT SIDE ONCE WORN.

TWO ANGLED PATCH FLAP POCKETS WITH VELCRO
CLOSURE, AT BACK.

FOUR DARTS AT KNEE TO GIVE MORE CAPACITY AND EASY WEARING.

TWO DECORATIVE SEAMS AT FRONT (THIGH) AND OTHER TWO STRAIGHT AT
BACK (KNEE).

260 G/M².

98% COTTON / 2% ELASTANE.



SCREEN PRINTING



EMBROIDERY



1

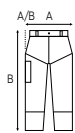


25



ARIZONA

MAN



USA	28	30	32	34	36	38	40	42	44
EU	XS	S	M	L	XL	XXL	3XL	4XL	5XL
	38	40	42	44	46	48	50	52	54
	38/115	40/115	42/115	44/116	46/116	48/116	50/117	52/117	54/118

REF: WKARIZONA



BK



ZC



NY

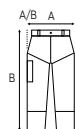


AR



ARIZONA LADY

LADY



USA	26	28	30	32	34	36	38	40
EU	XS	S	M	L	XL	XXL	3XL	4XL
	36	38	40	42	44	46	48	50
	36/103	38/104	40/114	42/104	44/105	46/105	48/106	50/106

REF: WKARIZONAL



BK



ZC



NY



AR

DUBAI

CARGO PANTS



CARGO PANTS. ELASTIC WAISTBAND AT BACK AND CLOSURE WITH HIDDEN BUTTON.

SEVEN BELT LOOPS AND ZIPPER MATCHING GROUND COLOUR.

TWO SEAMED POCKETS AT FRONT. ONE BINDING SMALL POCKET AT RIGHT TOP LEG ONCE WORN.

ONE PATCH GUSSET POCKET AT LEFT SIDE ONCE WORN. SNAP CLOSURE.

ONE FLAP POCKET AT BACK, RIGHT SIDE ONCE WORN WITH SNAP CLOSURE.

ONE POCKET AT BACK, LEFT SIDE ONCE WORN.

A STRAP OF SELF FABRIC FROM LEFT BACK POCKET BOTTOM PART, TO SIDE SEAM.

ONE ANGLED POCKET AT BACK RIGHT SIDE ONCE WORN.

BACK YOKE. TWO DECORATIVE SEAMS AT KNEE AND 1 AT BACK.

250 G/M². 65% POLYESTER / 35% COTTON.



SCREEN PRINTING



EMBROIDERY



1

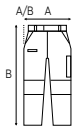


25



DUBAI

MAN



USA	28	30	32	34	36	38	40	42	44
EU	XS	S	M	L	XL	XXL	3XL	4XL	5XL
	38	40	42	44	46	48	50	52	54
	36/108	38/109	40/110	42/111	44/112	46/113	48/114	50/115	52/116

REF: WKDUBAI



GF



BK

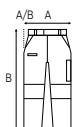


NY



DUBAI LADY

LADY



USA	26	28	30	32	34	36	38	40
EU	XS	S	M	L	XL	XXL	3XL	4XL
	36	38	40	42	44	46	48	50
	34/103	36/104	38/104	40/104	42/105	44/105	46/106	48/106

REF: WKDUBAIL



GF



BK



NY

TOKYO

TAILORING TROUSERS



TAILORING TROUSERS.

WAISTBAND CLOSURE WITH A BUTTON, SIX BELT LOOPS AND ZIPPER
MATCHING GROUND COLOUR. TWO BACK BINDING POCKETS WITH
ONE BUTTON CLOSURE. TWO SEAMED POCKETS AT FRONT.

260 G/M².

98% COTTON / 2% ELASTANE.



SCREEN PRINTING



EMBROIDERY



1

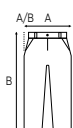


25



TOKYO

MAN



USA	28	30	32	34	36	38	40	42	44
EU	XS	S	M	L	XL	XXL	3XL	4XL	5XL
	38	40	42	44	46	48	50	52	54
	36/110	38/110	40/111	42/112	44/113	46/114	48/115	50/116	52/117

REF: WK TOKYO



BK



NY

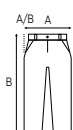


AR



TOKYO LADY

LADY



USA	26	28	30	32	34	36	38	40
EU	XS	S	M	L	XL	XXL	3XL	4XL
	36	38	40	42	44	46	48	50
	36/105	38/105	40/106	42/106	44/106	46/108	48/108	50/108

REF: WK TOKYO L



BK



NY



AR

DUBLIN

FIVE POCKETS TROUSERS



STRETCH, FIVE-POCKET TROUSERS.

WAISTBAND CLOSURE WITH A BUTTON, FIVE BELT LOOPS,

ZIPPER AND RIVETS IN BRASS COLOUR.

BUTTON AND RIVETS WITH LOGO.

TWO POCKETS AT FRONT, 1 SMALL AT RIGHT SIDE ONCE
WORN AND 2 AT BACK.

260 G/M².

98% COTTON / 2% ELASTANE.



SCREEN PRINTING



EMBROIDERY



1

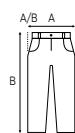


25



DUBLIN

MAN



USA	28	30	32	34	36	38	40	42	44
EU	XS	S	M	L	XL	XXL	3XL	4XL	5XL
	38	40	42	44	46	48	50	52	54
	38/110	40/110	42/111	44/111	46/112	48/112	50/113	52/113	54/113

REF: WKDUBLIN



BK



NY

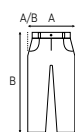


AR



DUBLIN LADY

LADY



USA	26	28	30	32	34	36	38	40
EU	XS	S	M	L	XL	XXL	3XL	4XL
	36	38	40	42	44	46	48	50
	35/99	37/100	39/101	41/102	43/103	45/104	47/105	49/106

REF: WKDUBLINL



BK



NY



AR



SAN MARINO

REF: WKSANMAR



LADY SKIRT PANTS.

FRONT OVERLAP PANEL WITH 3 BUTTONS CLOSURE MATCHING GROUND COLOUR.

FRONT METALLIC ZIPPER MATCHING GROUND COLOUR.

2 FRONT PLEATS IN THE SHORT.

2 VERTICAL DARTS AT BACK BELOW WAISTBAND.

1 FUNCTIONAL BINDING POCKET AT LEFT SIDE ONCE WORN.

200 G/M².

97% COTTON / 3% ELASTANE.

A/B	A	USA	EU
26	XS	36	36/37
28	S	38	38/39
30	M	40	40/41
32	L	42	42/43
34	XL	44	44/45
36	XXL	46	46/47



SCREEN PRINTING



EMBROIDERY



1



25



BV



NY



KH



AR

TURIN

REF: WKTURIN



ADULT BERMUDA TROUSER.

WAISTBAND WITH SIDE ELASTIC BANDS AND CLOSURE WITH A BUTTON.

FIVE BELT LOOPS AND ZIPPER MATCHING GROUND COLOUR.

TWO SEAMED POCKETS AT FRONT. TWO BINDING POCKETS WITH BUTTON

CLOSURE AT BACK. ONE FLAP POCKET AT RIGHT SIDE ONCE WORN, WITH

VELCRO CLOSURE.

200 G/M².

97% COTTON / 3% ELASTANE.



A/B	A	USA	EU	
28	XS	38	40/50	
30	S	40	42/52	
32	M	42	44/52	
34	L	44	46/53	
36	XL	46	48/53	
38	XXL	48	50/55	
40	3XL	50	52/55	
42	4XL	52	54/56	
44	5XL	54	56/56	



SCREEN PRINTING



EMBROIDERY



1



25

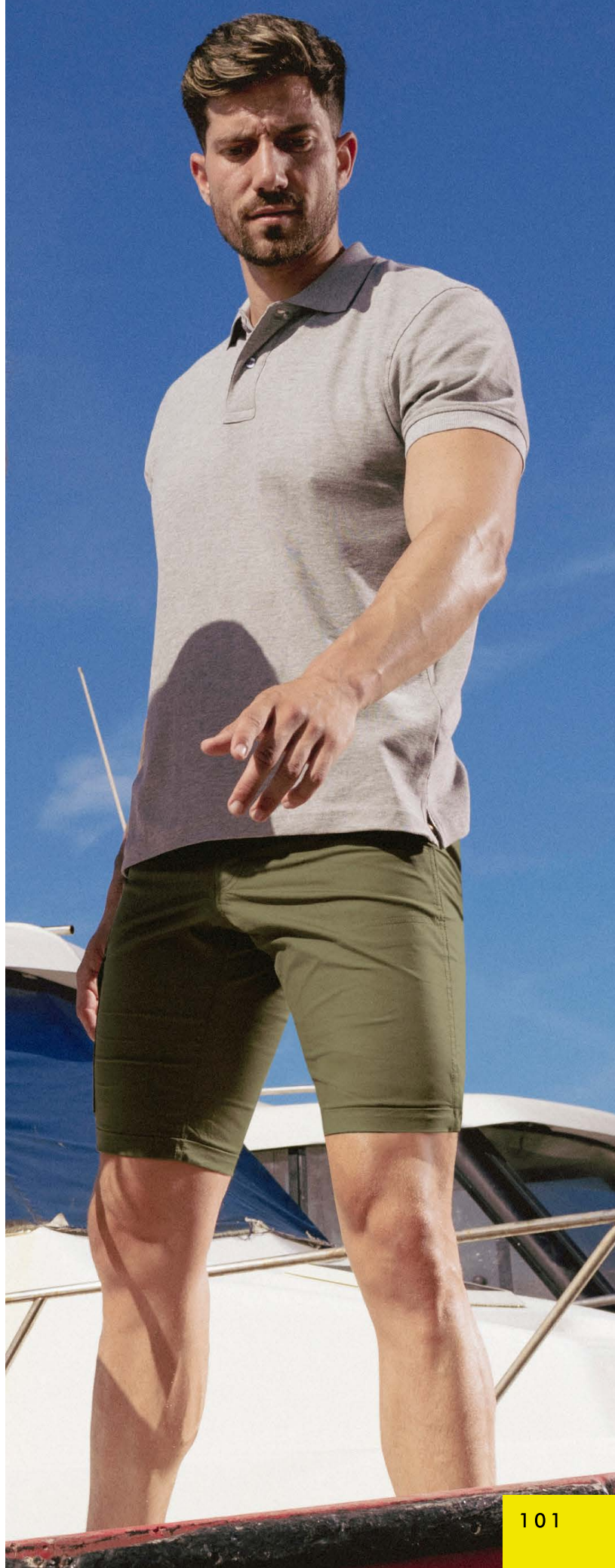


BV

NY

KH

AR



BOSTON

SWEATER FOR MAN, LADY AND KID



V-NECK SWEATER.

FITTED CUT.

RIBBED COLLAR, CUFFS AND HEM.

SOFT TOUCH.

300 G/M²

80% VISCOSE / 20% NYLON.



EMBROIDERY



1



25



MAN

BOSTON

REF: WKBOSTON



S • M • L • XL • XXL
48/65 50/67 52/69 54/71 56/73



GM



BK



BU



NY



BG



LADY

BOSTON LADY

REF: WKBOSTONL



S • M • L • XL
44/55 46/57 48/59 50/61



GM



BK



BU



NY



BG



BOSTON KID

REF: WKBOSTONK



1/2 • 3/4 • 5/6 • 7/8 • 9/11 • 12/14
30/38 33/43 36/47 38/50 40/55 46/65



GM



BU



NY



BG

new!
colors



DGM



DGM

Soft
TOUCH







WINTER LINE

Don't let the cold stop you.

***New* anti-peeling
treatment
on sweatshirts.**

Live it!



SWEATSHIRT UNISEX

REF: SWRA290



UNISEX'S SWEATSHIRT.

DOUBLE NEEDLE COLLAR, CUFFS AND WAISTBAND FOR
EXTRA DURABILITY. COLLAR, CUFFS AND BOTTOM HEM IN
2X1 RIB WITH ELASTANE.

290 G/M² APPROX.

65% POLYESTER / 35% COTTON.

AS: 67% COTTON / 31% POLYESTER / 2% VISCOSE.

GM: 61% COTTON / 31% POLYESTER / 8% VISCOSE.

DGM: 60% POLYESTER / 40% COTTON.



SCREEN PRINTING



HEAT TRANSFER



EMBROIDERY



25



25



XS 51/63

S 54/66

M 57/69

L 60/72

XL 63/76

XXL 66/78

3XL* 70/81



UNISEX





KID SWEATSHIRT

REF: SWRK290



KID'S SWEATSHIRT.

DOUBLE NEEDLE COLLAR, CUFFS AND WAISTBAND FOR EXTRA DURABILITY.

BOTTOM HEM, CUFFS AND COLLAR WITH 2X1 ELASTANE RIB.

290 G/M² APPROX.

65% POLYESTER / 35% COTTON.

AS: 67% COTTON / 31% POLYESTER / 2% VISCOSE.

GM: 61% COTTON / 31% POLYESTER / 8% VISCOSE.



SCREEN PRINTING



HEAT TRANSFER



EMBROIDERY



25



25



1/2 • 3/4 • 5/6 • 7/8 • 9/11 • 12/14
33/40 36/43 39/46 42/53 46/58 50/61





KANGAROO SWEATSHIRT

REF: SWRAKNG



MEN'S HOODED SWEATSHIRT.

DYED-TO-MATCH DRAWCORD.

CUFFS AND BOTTOM HEM IN 2X1 RIB WITH ELASTANE.

POUCH POCKET FOR EXTRA CARRY.

290 G/M² APPROX.

65% POLYESTER / 35% COTTON.

AS: 67% COTTON / 31% POLYESTER / 2% VISCOSE.

GM: 61% COTTON / 31% POLYESTER / 8% VISCOSE.

DGM: 60% POLYESTER / 40% COTTON.



SCREEN PRINTING



HEAT TRANSFER



EMBROIDERY



25



25



XS • S • M • L • XL • XXL • 3XL
52/68 54/69 56/70 58/71 60/72 62/74 64/76

XS-3XL



new!
colors



KING SIZE

REF: SWRAKNGKS

4XL • 5XL
67/78 69/80



25



25





KANGAROO SWEATSHIRT LADY

REF: SWULKNG



WOMAN'S HOODED SWEATSHIRT.

DYED-TO-MATCH DRAWCORD.

CUFFS AND BOTTOM HEM IN 2X1 RIB WITH ELASTANE.

POUCH POCKET FOR EXTRA CARRY.

290 G/M² APPROX.

65% POLYESTER / 35% COTTON.

AS: 67% COTTON / 31% POLYESTER / 2% VISCOSE.

GM: 61% COTTON / 31% POLYESTER / 8% VISCOSE.



SCREEN PRINTING



HEAT TRANSFER



EMBROIDERY



25



25



S • M • L • XL • XXL
48/65 50/67 52/69 54/71 56/72



KID KANGAROO SWEATSHIRT

REF: SWRKKG



KID'S HOODED SWEATSHIRT.

CUFFS AND BOTTOM HEM IN 2X1 RIB WITH ELASTANE.

POUCH POCKET FOR EXTRA CARRY.

290 G/M² APPROX.

65% POLYESTER / 35% COTTON.

AS: 67% COTTON / 31% POLYESTER / 2% VISCOSE.

GM: 61% COTTON / 31% POLYESTER / 8% VISCOSE..



SCREEN PRINTING



HEAT TRANSFER



EMBROIDERY



25



25



1/2 • 3/4 • 5/6 • 7/8 • 9/11 • 12/14
33/40 36/43 39/46 42/53 46/58 50/61



FULL ZIP SWEATSHIRT

REF: SWRAFUZIP



MEN'S SWEATSHIRT.

CUFFS AND BOTTOM HEM IN 2X1 RIB WITH

ELASTANE. KISSING ZIPPER.

HAND POCKETS.

290 G/M² APPROX.

65% POLYESTER / 35% COTTON.

GM: 61% COTTON / 31% POLYESTER / 8% VISCOSE.



SCREEN PRINTING



HEAT TRANSFER



EMBROIDERY



25



25



PAG. 112

REF: SWRKFUZIP



XS • S • M • L • XL • XXL
52/67 54/69 56/72 58/74 60/76 62/78



HALF ZIP SWEATSHIRT

REF: SWRAZIP



MEN'S HALF ZIP SWEATSHIRT.

CUFFS AND BOTTOM HEM IN 2X1 RIB WITH

ELASTANE.

290 G/M² APPROX.

65% POLYESTER / 35% COTTON.

AS: 67% COTTON / 31% POLYESTER / 2% VISCOSE.



SCREEN PRINTING



HEAT TRANSFER



EMBROIDERY



25



25



S • M • L • XL • XXL
54/66 57/69 60/72 63/76 66/78





HOODED SWEATSHIRT

REF: SWUAHOOD



MEN'S HOODED SWEATSHIRT.

DYED-TO-MATCH DRAWCORD.

CUFFS AND BOTTOM HEM IN 2X1 RIB WITH

ELASTANE. KISSING ZIPPER.

POUCH POCKET FOR EXTRA CARRY.

290 G/M² APPROX.

65% POLYESTER / 35% COTTON.

GM: 61% COTTON / 31% POLYESTER / 8% VISCOSE.

DGM: 60% POLYESTER / 40% COTTON.



3XL*



SCREEN PRINTING



HEAT TRANSFER



EMBROIDERY



25



25



PAG. 125
REF: SWLHOOD



PAG. 112
REF: SWRKHOD



XS • S • M • L • XL • XXL • 3XL*

52/67 54/69 56/70 58/71 60/72 62/74 64/76



KID HOODED SWEATSHIRT

REF: SWRKHOOD



KID'S HOODED SWEATSHIRT.

DYED-TO-MATCH DRAWCORD.

CUFFS AND BOTTOM HEM IN 2X1 RIB WITH ELASTANE.

KISSING ZIPPER. POUCH POCKET FOR EXTRA CARRY.

290 G/M² APPROX.

65% POLYESTER / 35% COTTON.

AS: 67% COTTON / 31% POLYESTER / 2% VISCOSE.



1/2 • 3/4 • 5/6 • 7/8 • 9/11 • 12/14
33/40 36/43 39/46 42/53 46/58 50/61



WH



AS



BK



RD



PK



RB



NY



SCREEN PRINTING



HEAT TRANSFER



EMBROIDERY



25



25



PAG. 111
REF: SWUAHOOD



PAG. 125
REF: SWULHOOD



KID FULL ZIP SWEATSHIRT

REF: SWRKFUZIP



KID'S SWEATSHIRT.

CUFFS AND BOTTOM HEM IN 2X1 RIB WITH ELASTANE.

KISSING ZIPPER.

HAND POCKETS.

290 G/M² APPROX.

65% POLYESTER / 35% COTTON.

AS: 67% COTTON / 31% POLYESTER / 2% VISCOSE.



WH



AS



BK



RD



BU



RB



NY



BG



SCREEN PRINTING



HEAT TRANSFER



EMBROIDERY



25



25



PAG. 110
REF: SWRAFUZIP



1/2 • 3/4 • 5/6 • 7/8 • 9/11 • 12/14
33/40 36/43 39/46 42/53 46/58 50/61



SWEATSHIRT *new!* LADY CROPPED

REF: SWULCROP



CROPPED KANGAROO SWEATSHIRT.

DYED-TO-MATCH DRAWCORD.

CUFFS IN 2X1 RIB WITH ELASTANE.

290 G/M² APROX.

65% POLYESTER / 35% COTTON.

GM: 61% COTTON / 31% POLYESTER / 8% VISCOSE.



SCREEN PRINTING



HEAT TRANSFER



EMBROIDERY



25



25



BK



GM



S 58/47

M 60/49

L 62/51

XL 64/53

XXL 66/55



U
N
I
S
E
X

SWEAT PANTS CUFF UNISEX

REF: SWPANTSCFF



UNISEX PANTS WITH CUFFS.

ELASTIC WAISTBAND WITH MATCHING DRAWCORD.

HAND POCKETS. ELASTIC CUFF AT THE HEM.

290 G/M² APPROX.

65% POLYESTER / 35% COTTON.

GM: 61% COTTON / 31% POLYESTER / 8% VISCOSE.



SCREEN PRINTING



HEAT TRANSFER



EMBROIDERY



25



25



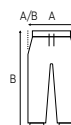
GM



BK



NY



S 50/104

M 52/106

L 54/108

XL 55/110

XXL 57/112



MAN



GM



BK



NY



LADY



GM



BK



NY



SWEAT PANTS MAN

REF: SWPANTSM



MEN'S JOGGERS.

ELASTIC WAISTBAND WITH MATCHING DRAWCORD.

HAND POCKETS.

STRAIGHT CUT.

290 G/M² APPROX.

65% POLYESTER / 35% COTTON.

GM: 61% COTTON / 31% POLYESTER / 8% VISCOSE.



SCREEN PRINTING



HEAT TRANSFER



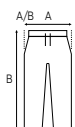
EMBROIDERY



25



25



S • M • L • XL • XXL
52/106 54/108 55/110 57/112 58/114

SWEAT PANTS LADY

REF: SWPANTSL



WOMAN'S JOGGERS.

ELASTIC WAISTBAND WITH MATCHING DRAWCORD.

STRAIGHT CUT.

290 G/M² APPROX.

65% POLYESTER / 35% COTTON.

GM: 61% COTTON / 31% POLYESTER / 8% VISCOSE.



SCREEN PRINTING



HEAT TRANSFER



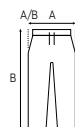
EMBROIDERY



25



25



S • M • L • XL • XXL
40/99 42/101 44/103 46/105 48/107



SWEAT PANTS KID

REF: SWPANTSK



KID'S JOGGER.

ELASTIC WAISTBAND WITH MATCHING DRAWCORD.

HAND POCKETS.

ELASTIC CUFF AT THE HEM.

290 G/M² APPROX.

65% POLYESTER / 35% COTTON.

GM: 61% COTTON / 31% POLYESTER / 8% VISCOSE.



SCREEN PRINTING



HEAT TRANSFER



EMBROIDERY



25

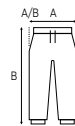


25



GM

NY



1/2	•	3/4	•	5/6	•	7/8	•	9/11	•	12/14
28/40		30/52		33/60		35/68		37/75		39/85



SWEAT SHORTS MAN

REF: SWSHORTSM



MEN'S SHORTS.

ELASTIC WAISTBAND WITH MATCHING DRAWCORD.

FRONT POCKETS WITH MARKED STITCHING.

ONE BACK POCKET.

290 G/M² APPROX.

65% POLYESTER / 35% COTTON.

GM: 61% COTTON / 31% POLYESTER / 8% VISCOSE.



SCREEN PRINTING



HEAT TRANSFER



EMBROIDERY



25



25



GM

BK

NY



S	•	M	•	L	•	XL
49/45		51/49		52/54		54/58



CVC

80%
COTTON

20%
POLYESTER

- Perfect result for transfer and digital printing.
- Avoids iron marks on the garment.
- High resistance to peeling.



SWEATSHIRT CVC

REF: SWCR275



MEN'S SWEATSHIRT.

DOUBLE NEEDLE STITCHING IN COLLAR, SLEEVES AND
BOTTOM HEM FOR EXTRA DURABILITY. BOTTOM HEM,
CUFFS AND COLLAR WITH 2X1 ELASTANE RIB.

275 G/M² APPROX.

80% COTTON / 20% POLYESTER.

GM: 73% COTTON / 20% POLYESTER / 7% VISCOSE.



TEAR AWAY LABEL



SCREEN PRINTING



HEAT TRANSFER



EMBROIDERY



25



25



WH



GM



BK



RD



RB



NY



XS 51/63

S 54/66

M 57/69

L 60/72

XL 63/76

XXL 66/78

3XL 70/81

SWEATSHIRT LADY

CVC

REF: SWRL275



WOMAN'S SWEATSHIRT.

DOUBLE NEEDLE STITCHING IN COLLAR, SLEEVES AND

BOTTOM HEM FOR EXTRA DURABILITY.

BOTTOM HEM, CUFFS AND COLLAR WITH 2X1 ELASTANE RIB.

275 G/M² APPROX.

80% COTTON / 20% POLYESTER.

GM: 73% COTTON / 20% POLYESTER / 7% VISCOSE.



WH GM BK RD



PK RB NY



S • M • L • XL • XXL
48/65 50/67 52/69 54/71 56/72



TEAR AWAY LABEL



SCREEN PRINTING



HEAT TRANSFER



EMBROIDERY



25



25



SWEATSHIRT KID

CVC

REF: SWRK275



KID'S SWEATSHIRT.

DOUBLE NEEDLE COLLAR, CUFFS AND WAISTBAND FOR EXTRA

DURABILITY. BOTTOM HEM, CUFFS AND COLLAR WITH 2X1

ELASTANE RIB.

275 G/M² APPROX.

80% COTTON / 20% POLYESTER.

GM: 73% COTTON / 20% POLYESTER / 7% VISCOSE.



WH GM BK



RD RB NY



1/2 • 3/4 • 5/6 • 7/8 • 9/11 • 12/14
33/40 36/43 39/46 42/53 46/58 50/61



TEAR AWAY LABEL



SCREEN PRINTING



HEAT TRANSFER



EMBROIDERY



25



25





KANGAROO CVC SWEATSHIRT

REF: SWKNG275



MEN'S HOODED SWEATSHIRT.

DYED-TO-MATCH DRAWCORD.

CUFFS AND BOTTOM HEM IN 2X1 RIB WITH ELASTANE.

POUCH POCKET FOR EXTRA CARRY.

275 G/M² APPROX.

80% COTTON / 20% POLYESTER.

GM: 73% COTTON / 20% POLYESTER / 7% VISCOSE.



XS • S • M • L • XL • XXL • 3XL
52/68 54/69 56/70 58/71 60/72 62/74 64/76



TEAR AWAY LABEL



SCREEN PRINTING



HEAT TRANSFER



EMBROIDERY



25



25



KANGAROO LADY CVC SWEATSHIRT

REF: SWULKNG275



WOMAN'S HOODED SWEATSHIRT.

DYED-TO-MATCH DRAWCORD.

CUFFS AND BOTTOM HEM IN 2X1 RIB WITH ELASTANE.

POUCH POCKET FOR EXTRA CARRY.

275 G/M² APPROX.

80% COTTON / 20% POLYESTER.

GM: 73% COTTON / 20% POLYESTER / 7% VISCOSE.



S • M • L • XL • XXL
48/66 50/68 52/70 54/72 56/74



TEAR AWAY LABEL



SCREEN PRINTING



HEAT TRANSFER



EMBROIDERY



25



25

KANGAROO KID CVC SWEATSHIRT

REF: SWRKKNG275



KID'S HOODED SWEATSHIRT.

CUFFS AND BOTTOM HEM IN 2X1 RIB WITH ELASTANE.

POUCH POCKET FOR EXTRA CARRY.

275 G/M² APPROX.

80% COTTON / 20% POLYESTER.

GM: 73% COTTON / 20% POLYESTER / 7% VISCOSE.



1/2 • 3/4 • 5/6 • 7/8 • 9/11 • 12/14
33/40 36/43 39/46 42/53 46/58 50/61



TEAR AWAY LABEL



SCREEN PRINTING



HEAT TRANSFER



EMBROIDERY



25



25





HOODED CVC SWEATSHIRT

REF: SWHOOD275



MEN'S HOODED SWEATSHIRT.

DYED-TO-MATCH DRAWCORD.

CUFFS AND BOTTOM HEM IN 2X1 RIB WITH ELASTANE.

KISSING ZIPPER.

POUCH POCKET FOR EXTRA CARRY.

275 G/M² APPROX.

80% COTTON / 20% POLYESTER.

GM: 73% COTTON / 20% POLYESTER / 7% VISCOSE.



XS • S • M • L • XL • XXL

52/67 54/69 56/70 58/71 60/72 62/74



TEAR AWAY LABEL



SCREEN PRINTING



HEAT TRANSFER



EMBROIDERY



25



25



FULL ZIP CVC SWEATSHIRT

REF: SWFUZIP275



MEN'S SWEATSHIRT.

CUFFS AND BOTTOM HEM IN 2X1 RIB WITH ELASTANE.

KISSING ZIPPER.

HAND POCKETS.

275 G/M² APPROX.

80% COTTON / 20% POLYESTER.

GM: 73% COTTON / 20% POLYESTER / 7% VISCOSE.



XS • S • M • L • XL • XXL

52/67 54/69 56/72 58/74 60/76 62/78



TEAR AWAY LABEL



SCREEN PRINTING



HEAT TRANSFER



EMBROIDERY

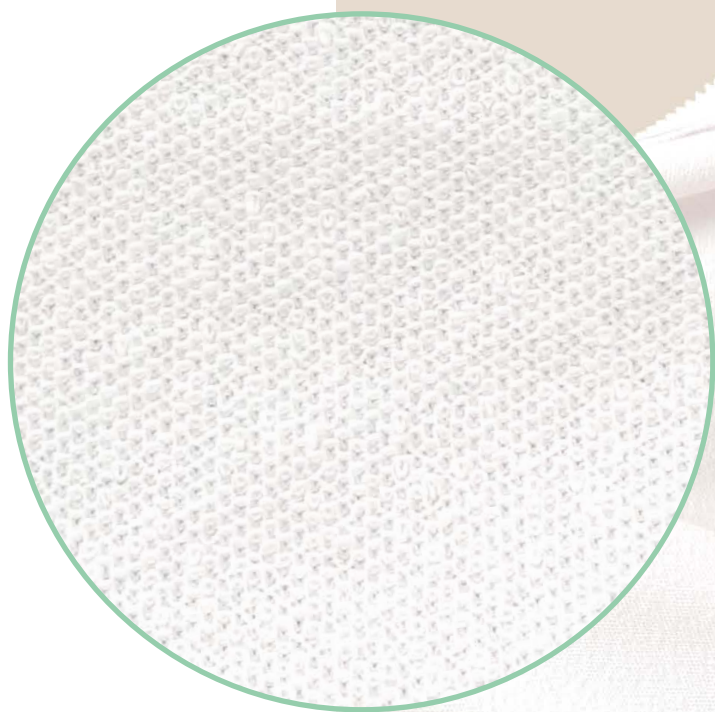


25



25

French Terry





**French
Terry**

PEACH CREW NECK

REF: SWCRPEACH



MEN'S SWEATSHIRT.

DOUBLE NEEDLE COLLAR, CUFFS AND WAISTBAND

FOR EXTRA DURABILITY.

COLLAR, CUFFS AND BOTTOM HEM IN 2X1 RIB WITH ELASTANE.

FRENCH TERRY FABRIC.

260 G/M² APPROX.

60% COTTON / 40% POLYESTER.



SCREEN PRINTING



HEAT TRANSFER



EMBROIDERY



25



25

**new!
color**



CHC



MU



BU



DN



BT



S • M • L • XL • XXL
54/66 57/69 60/72 63/76 66/78

Soft
TOUCH

PEACH KANGAROO

REF: SWKNGPEACH



MEN'S HOODED SWEATSHIRT.

DOUBLE NEEDLE COLLAR, CUFFS AND WAISTBAND

FOR EXTRA DURABILITY.

COLLAR, CUFFS AND BOTTOM HEM IN 2X1 RIB WITH ELASTANE.

FRENCH TERRY FABRIC.

260 G/M² APPROX.

60% COTTON / 40% POLYESTER.



SCREEN PRINTING



HEAT TRANSFER



EMBROIDERY



25



25



CHC



MU



BU



DN

**new!
color**



BT



S • M • L • XL • XXL
54/69 56/70 58/71 60/72 62/74

Soft
TOUCH



**French
Terry**



**French
Terry**

LADY CREW NECK SWEATSHIRT

REF: SWULCR



WOMAN'S SWEATSHIRT.

DOUBLE NEEDLE COLLAR, CUFFS AND WAISTBAND FOR
EXTRA DURABILITY.

COLLAR, CUFFS AND BOTTOM HEM IN 2X1 RIB WITH
ELASTANE.

FRENCH TERRY FABRIC.

260 G/M² APPROX. 65% POLYESTER / 35% COTTON.

GM: 61% COTTON / 31% POLYESTER / 8% VISCOSE.



S • M • L • XL • XXL
47/68 49/70 51/72 53/74 55/76

LADY FULL ZIP HOODED SWEATSHIRT

REF: SWULHOOD



WOMAN'S HOODED SWEATSHIRT.

DYED-TO-MATCH DRAWCORD.

2X1 RIB CUFFS AND WAISTBAND.

KISSING ZIPPER.

POUCH POCKET FOR EXTRA CARRY.

FRENCH TERRY FABRIC. 260 G/M² APPROX.

65% POLYESTER / 35% COTTON.

GM: 61% COTTON / 31% POLYESTER / 8% VISCOSE.



PAG. 111
REF: SWUAHOOD



PAG. 112
REF: SWRKHOOD



S • M • L • XL • XXL
48/68 50/70 52/72 54/74 56/76



**French
Terry**



**French
Terry**

BABY PLAYSUIT LS

REF: SWRBSUIT



BABY'S LONG SLEEVE PLAYSUIT.

LONG SLEEVES ROMPER WITH SNAP FASTENERS IN THE BACK.

CUFFS IN 2X1 RIB WITH ELASTANE.

FRENCH TERRY FABRIC.

270 G/M².

65% POLYESTER / 35% COTTON.

GM: 61% COTTON / 31% POLYESTER / 8% VISCOSE.



3M • 6M • 9M • 12M • 18M
22/46 24/50 26/54 28/58 30/62



SCREEN PRINTING



HEAT TRANSFER



EMBROIDERY



50



50

new!

BABY HOODED SWEATSHIRT

REF: SWRBHOOD



BABY'S HOODED SWEATSHIRT.

CUFFS AND BOTTOM HEM IN 2X1 RIB WITH ELASTANE.

FRENCH TERRY FABRIC.

260 G/M².

65% POLYESTER / 35% COTTON.

GM: 61% COTTON / 31% POLYESTER / 8% VISCOSE.



SCREEN PRINTING



HEAT TRANSFER



EMBROIDERY



25



25



0 • 1 • 2
25/28 27/30 29/32



B1



GM



MO



NY



PV

new!

BABY SWEAT PANTS

REF: SWPANTSB



BABY'S PANTS.

CUFFS AND BOTTOM HEM IN 2X1 RIB WITH ELASTANE.

FRENCH TERRY FABRIC.

260 G/M².

65% POLYESTER / 35% COTTON.

GM: 61% COTTON / 31% POLYESTER / 8% VISCOSE.



SCREEN PRINTING



HEAT TRANSFER



EMBROIDERY



25



25



0 • 1 • 2
25/34 27/36 29/38



BT



GM



MO



NY



PV

**French
Terry**



new!





Eco-friendly, organic and recycled fabrics.
Clear goal: to care for the place where we live.



ECO 



UNISEX



EVEREST *new!*

REF: SWRAECO



UNISEX SWEATSHIRT.

ROUND NECK. RAGLAN SLEEVE.

DOUBLE NEEDLE COLLAR, CUFFS AND WAISTBAND FOR EXTRA DURABILITY

CUFFS AND BOTTOM HEM IN 2X1 RIB WITH ELASTANE.

275 G/M² APPROX.

80% ORGANIC COTTON / 20% RECYCLED POLYESTER

DGM: 63% ORGANIC COTTON / 21% RECYCLED POLYESTER / 16% VISCOSE



SCREEN PRINTING



HEAT TRANSFER



EMBROIDERY



25



25



XS • S • M • L • XL • XXL • 3XL
51/63 54/66 57/69 60/72 63/76 66/78 70/81

TEIDE *new!*

REF: SWKNGECO



HOODED SWEATSHIRT.

DYED-TO-MATCH DRAWCORD.

POUCH POCKET FOR EXTRA CARRY.

CUFFS AND BOTTOM HEM IN 2X1 RIB WITH ELASTANE.

275 G/M² APPROX.

80% ORGANIC COTTON / 20% RECYCLED POLYESTER

DGM: 63% ORGANIC COTTON / 21% RECYCLED POLYESTER / 16% VISCOSE



XS • S • M • L • XL • XXL • 3XL
52/68 54/69 56/70 58/71 60/72 62/74 64/76



SCREEN PRINTING



HEAT TRANSFER



EMBROIDERY



25



25



ECO 



UNISEX





ECO 



UNISEX



FUJI *new!*

REF: SWHOODECO



HOODED SWEATSHIRT.

DYED-TO-MATCH DRAWCORD.

KISSING ZIPPER.

POUCH POCKET FOR EXTRA CARRY.

CUFFS AND BOTTOM HEM IN 2X1 RIB WITH ELASTANE.

275 G/M² APPROX.

80% ORGANIC COTTON / 20% RECYCLED POLYESTER

DGM: 63% ORGANIC COTTON / 21% RECYCLED POLYESTER / 16% VISCOSE



SCREEN PRINTING



HEAT TRANSFER



EMBROIDERY



25



25



XS • S • M • L • XL • XXL • 3XL
52/67 54/69 56/70 58/71 60/72 62/74 64/76

KID EVEREST *new!*

REF: SWRKECO



KID'S SWEATSHIRT.

ROUND NECK. RAGLAN SLEEVE.

DOUBLE NEEDLE COLLAR, CUFFS AND WAISTBAND FOR EXTRA DURABILITY

CUFFS AND BOTTOM HEM IN 2X1 RIB WITH ELASTANE.

275 G/M² APPROX.

80% ORGANIC COTTON / 20% RECYCLED POLYESTER

DGM: 63% ORGANIC COTTON / 21% RECYCLED POLYESTER / 16% VISCOSE



SCREEN PRINTING



HEAT TRANSFER



EMBROIDERY



25



25



WH

BK

NY

ST



BT

EU

GM

DGM



1/2 • 3/4 • 5/6 • 7/8 • 9/11 • 12/14

33/40 36/43 39/46 42/53 46/58 50/61



KID TEIDE *new!*

REF: SWKNGKECO



KID'S HOODED SWEATSHIRT.

DYED-TO-MATCH DRAWCORD.

POUCH POCKET FOR EXTRA CARRY.

CUFFS AND BOTTOM HEM IN 2X1 RIB WITH ELASTANE.

275 G/M² APPROX.

80% ORGANIC COTTON / 20% RECYCLED POLYESTER

DGM: 63% ORGANIC COTTON / 21% RECYCLED POLYESTER / 16% VISCOSE



SCREEN PRINTING



HEAT TRANSFER



EMBROIDERY



25



25



WH

BK

NY

ST



BT

EU

GM

DGM



1/2 • 3/4 • 5/6 • 7/8 • 9/11 • 12/14

33/40 36/43 39/46 42/53 46/58 50/61





MICRO FLEECE MAN

REF: MICFLEMAN



MAN'S MICROPOLAR FLEECE.

PILL-RESISTANT.

QUARTER-ZIP.

ELASTIC CUFFS.

140 G/M² APPROX.

100% POLYESTER.



EMBROIDERY



1



25



XS 49/66

S 51/68

M 53/70

L 55/73

XL 57/76

XXL 59/78

MICRO FLEECE LADY

REF: MICFLELADY



WOMAN'S FITTED MICROPOLAR FLEECE.

PILL-RESISTANT.

QUARTER-ZIP.

ELASTIC CUFFS.

140 G/M² APPROX.

100% POLYESTER.



EMBROIDERY



1



25



XS 46/61

S 48/63

M 51/65

L 53/67

XL 55/69

XXL 58/70



POLAR FLEECE MAN

REF: FLRA300



EMBROIDERY



1



15



MAN'S POLAR FLEECE.

HEM WITH ADJUSTABLE DRAW CORD AND STOPPER.

PILL-RESISTANT.

FULL ZIP.

HAND POCKETS.

ELASTIC CUFFS.

300 G/M² APPROX.

100% POLYESTER.



WH

OFWH

GM



GF

BK

OR



RD

BU

PU



SK

AQ

RB



NY

KG

LM



BG

FG

SA



XS 56/64

S 58/66

M 60/68

L 62/70

XL 64/73

XXL 66/75

3XL 68/80



POLAR FLEECE LADY

REF: FLRL300



WOMAN'S FITTED POLAR FLEECE.

HEM WITH ADJUSTABLE DRAW CORD AND STOPPER.

PILL-RESISTANT.

FULL ZIP.

2 ZIPPED LOWER POCKETS.

ELASTIC CUFFS.

300 G/M² APPROX.

100% POLYESTER.



EMBROIDERY



1



15



XS • S • M • L • XL • XXL
45/59 47/61 50/63 52/65 55/67 57/69



POLAR FLEECE KID

REF: FLRK300



KID'S POLAR FLEECE.

HEM WITH ADJUSTABLE DRAW CORD AND STOPPER.

PILL-RESISTANT.

FULL ZIP.

2 ZIPPED LOWER POCKETS.

300 G/M² APPROX.

100% POLYESTER.



EMBROIDERY



1



15



1/2 • 3/4 • 5/6 • 7/8 • 9/11 • 12/14
37/43 40/47 43/51 46/55 49/59 52/63





POLAR FLEECE 340

REF: FLRA340

UNISEX



POLAR FLEECE UNISEX.

REINFORCED PATCHES ON SHOULDERS AND ELBOWS IN CONTRAST.

PILL-RESISTANT.

FULL ZIP IN CONTRAST.

2 ZIPPED SIDE POCKETS IN CONTRAST.

1 ZIPPED CHEST POCKET IN CONTRAST.

HEM WITH ADJUSTABLE DRAW CORD AND STOPPER.

340 G/M² APPROX.

100% POLYESTER.



EMBROIDERY



1



15



XS	•	S	•	M	•	L	•	XL	•	XXL	•	3XL	•	4XL	•	5XL
51/65		53/65		56/68		58/71		61/76		64/76		68/82		76/85		80/88



BK/BK



RE/BK



BK/RD



BG/BK



NY/BK



ZC/BK



GF/BK



RD/BK





SOFTSHELL JACKET

REF: SOFTJACK / REF: SOFTJACKL



MAN'S AND LADY'S JACKET.

THREE-LAYER FUNCTIONAL MATERIAL WITH BREATHABLE

MEMBRANE. INSIDE MADE OF MICRO FLEECE WITH ADJUSTABLE

SHOCKCORD HEM. CHEST AND SIDE ZIP POCKETS.

FULL ZIP.

300 G/M² APPROX.

OUTER LAYER: 95% POLYESTER / 5% ELASTANE.

INNER LAYER: 100% POLYESTER.



MAN

REF: SOFTJACK



WH



GF



BK



RD



NY

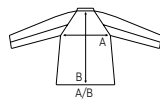


BG

new!
color



RB



S • M • L • XL • XXL • 3XL • 4XL
53/70 55/72 57/74 59/76 61/78 63/80 65/82



LADY

REF: SOFTJACKL

SLIGHTLY
FITTED



WH



GF



BK



RD



NY

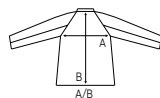


BG

new!
color



RB



S • M • L • XL
47/61 50/63 52/65 55/67



SCREEN PRINTING



HEAT TRANSFER



EMBROIDERY



1



25

SOFTSHELL VEST

REF: SOFTVEST



MAN'S VEST. THREE-LAYER FUNCTIONAL MATERIAL WITH BREATHABLE MEMBRANE.

INSIDE MADE OF MICRO FLEECE WITH ADJUSTABLE SHOCKCORD HEM. CHEST AND SIDE ZIP POCKETS.

FULL ZIP.

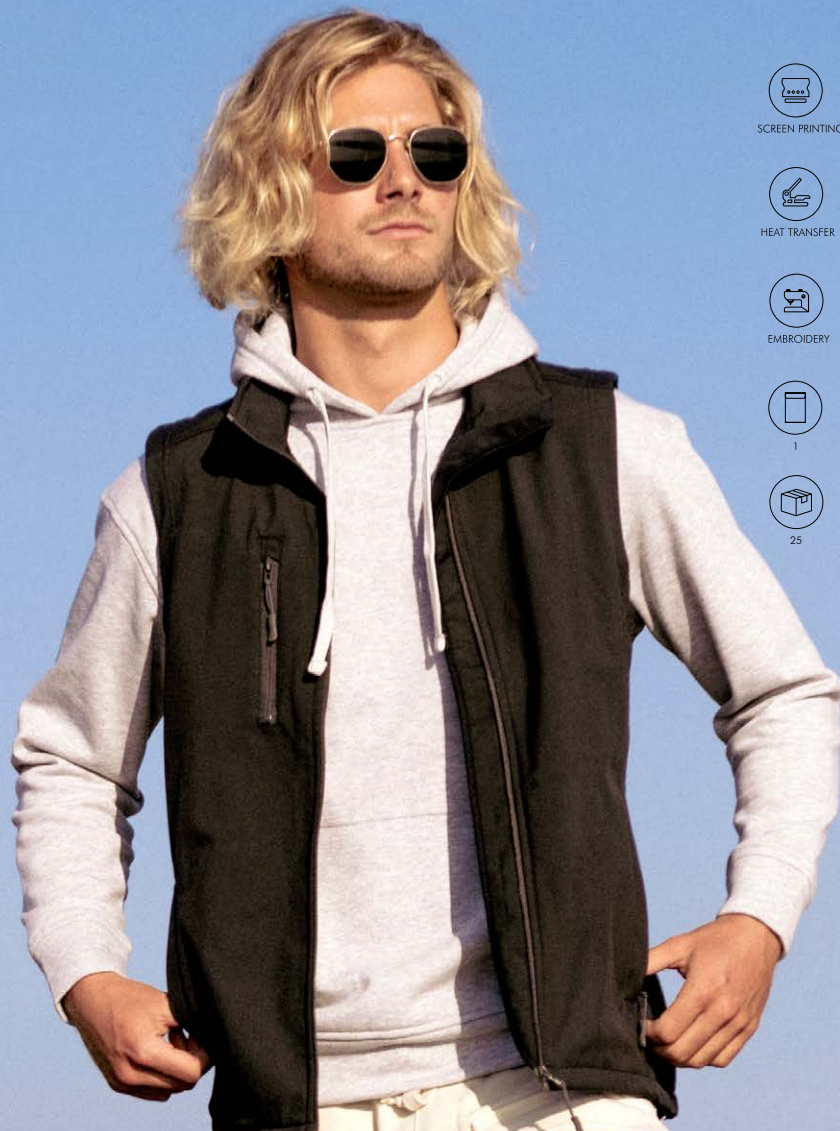
300 G/M² APPROX.

OUTER LAYER: 95% POLYESTER / 5% ELASTANE.

INNER LAYER: 100% POLYESTER.



S • M • L • XL • XXL
53/70 55/72 57/74 59/76 61/78



SCREEN PRINTING



HEAT TRANSFER



EMBROIDERY



1



25

SOFTSHELL JACKET KID

REF: SOFTJACKID



KID'S JACKET.

THREE-LAYER FUNCTIONAL MATERIAL WITH BREATHABLE MEMBRANE.

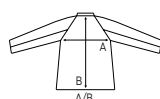
INSIDE MADE OF MICRO FLEECE WITH ADJUSTABLE SHOCKCORD HEM.

HAND POCKETS. CHEST AND SIDE ZIP POCKETS.

300 G/M² APPROX.

OUTER LAYER: 95% POLYESTER / 5% ELASTANE.

INNER LAYER: 100% POLYESTER.



3/4 • 5/6 • 7/8 • 9/11 • 12/14
36/47 40/50 42/52 46/59 48/61



SCREEN PRINTING



HEAT TRANSFER



EMBROIDERY



1



25







U R B A N L I N E

Make a difference
without giving up
on style.

Feel it!





URBAN SEA MAN

REF: TSSEA



MEN'S SHORT SLEEVE T-SHIRT.

SELF-FABRIC RAW EDGE COLLAR AND CUFFS.

PREMIUM QUALITY.

SINGLE JERSEY (34'S).

ENZYME WASH.

120 G/M².

100% COTTON.



WH



BK



CHC



DN



S • M • L • XL
52/70 54/72 56/74 58/76



100% COTTON



EMBROIDERY



TEAR AWAY LABEL



50



SCREEN PRINTING



50



HEAT TRANSFER



URBAN SEA LADY

REF: TSLSEA



WOMAN'S SHORT SLEEVE T-SHIRT.

ROLLED CUFF.

1X1 RIBBED V-NECK COLLAR.

FASHIONABLE WIDE NECK DROP.

SINGLE JERSEY (34'S).

ENZYME WASH.

120 G/M².

100% COTTON.



WH



BK



CHC



DN



S/M • L/XL

48/68

50/70



100% COTTON



EMBROIDERY



TEAR AWAY LABEL



SLIM FIT



SCREEN PRINTING



50



HEAT TRANSFER



50



URBAN SLUB MAN

REF: TSUASLB



MEN'S SHORT SLEEVE T-SHIRT.

SLUB FABRIC.

SELF-FABRIC RAW EDGE COLLAR AND CUFFS.

120 G/M².

100% SLUB COTTON.



WH

BL



XS

• S/M •

L

52/70

54/72

58/76



100% COTTON



EMBROIDERY



TEAR AWAY LABEL



50



SCREEN PRINTING



50



HEAT TRANSFER



URBAN SLUB LADY

REF: TSULSLB



WOMAN'S SHORT SLEEVE T-SHIRT.

SLUB FABRIC.

1X1 RIBBED V-NECK COLLAR.

CURVED BOTTOM HEM.

ROLLED CUFF.

120 G/M².

100% SLUB COTTON.



WH BK MG

Neon



LYN ORN PKN SKN



S/M • L/XL
48/68 50/70



100% COTTON



EMBROIDERY



TEAR AWAY LABEL



SLIM FIT



SCREEN PRINTING



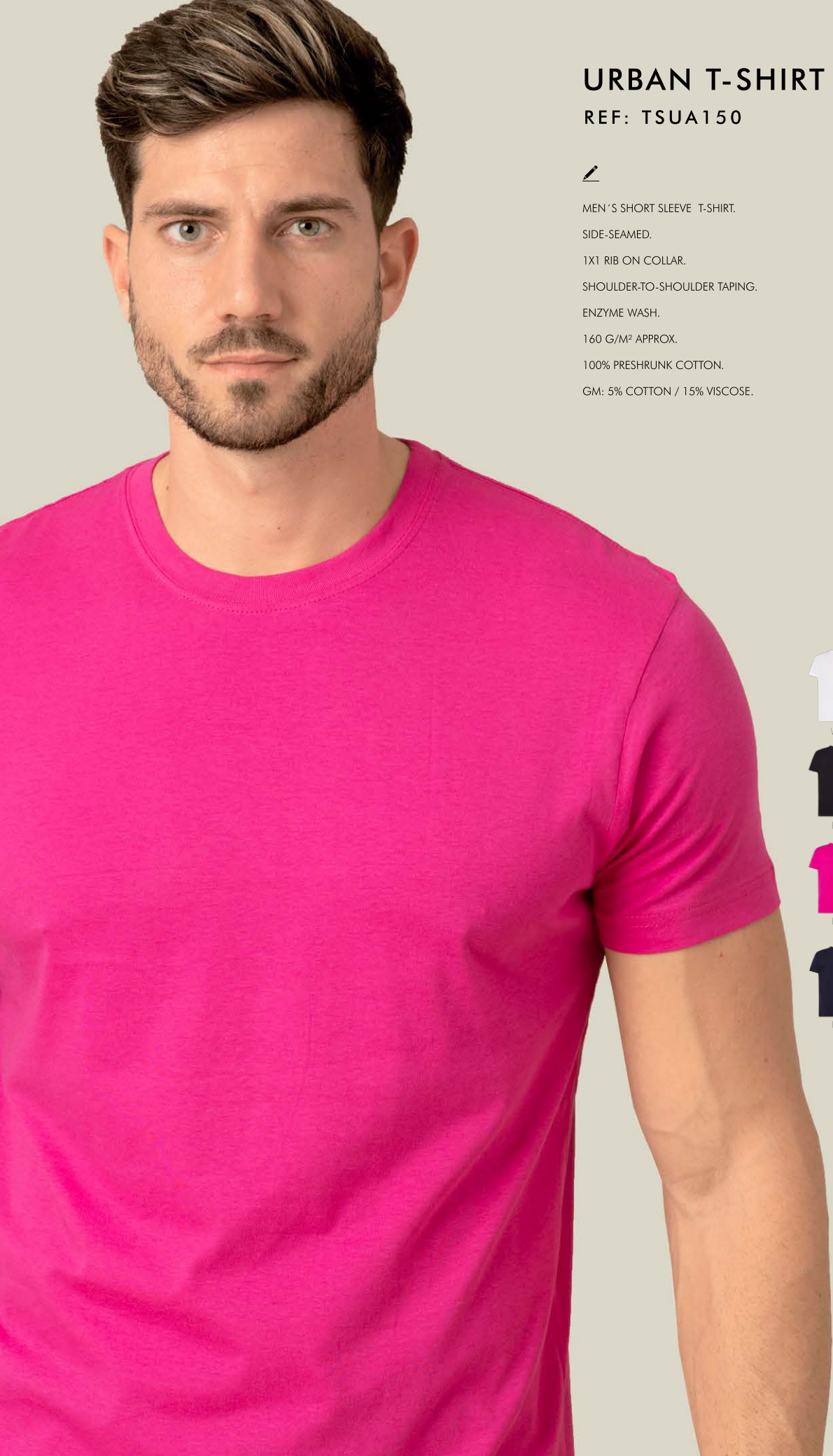
50



HEAT TRANSFER



50



URBAN T-SHIRT

REF: TSUA150



MEN'S SHORT SLEEVE T-SHIRT.

SIDE-SEAMED.

1X1 RIB ON COLLAR.

SHOULDER-TO-SHOULDER TAPING.

ENZYME WASH.

160 G/M² APPROX.

100% PRESHRUNK COTTON.

GM: 5% COTTON / 15% VISCOSE.



100% COTTON



TEAR AWAY LABEL



SCREEN PRINTING



HEAT TRANSFER



EMBROIDERY



100



100



WH



GM



GF



BK



SY



RD



FU



AQ



RB



NY



KH



CH



S 48/71

M 51/74

L 55/76

XL 58/79

XXL 61/81

URBAN V-NECK

REF: TSUAPICO



MEN'S SHORT SLEEVE T-SHIRT.

SIDE-SEALED.

1X1 RIB ON COLLAR V-NECK.

SHOULDER-TO-SHOULDER TAPING.

ENZYME WASH.

160 G/M² APPROX.

100% PRESHRUNK COTTON.

GM: 85% COTTON / 15% VISCOSE.

HEATHER: 65% POLYESTER / 35% COTTON.

DNH: 60% COTTON / 40% POLYESTER.



WH



GM



BK



RD



FU



RB



NY

Heather



CHQH



MUH



BUH



LVH



TUH



DNH



BGH



100% COTTON



TEAR AWAY LABEL



SCREEN PRINTING



HEAT TRANSFER



EMBROIDERY



100



100



PAG. 31
REF: TSRLCMFP



S 48/70

M 51/72

L 53/74

XL 56/76

XXL 58/80





URBAN BACK TAIL

REF: TSUABACK



MEN'S SHORT SLEEVE T-SHIRT.

SIDE-SEAMED.

RETAIL FIT.

ROUNDED BOTTOM HEM.

DROP TAIL.

150 G/M².

100% COTTON.



WH



BK



S • M • L • XL • XXL
48/76 52/79 56/81 60/84 63/86



100% COTTON



TEAR AWAY LABEL



SCREEN PRINTING



HEAT TRANSFER



EMBROIDERY



50



50



URBAN BREAK

REF: TSUABREAK



MEN'S SHORT SLEEVE T-SHIRT.

SLUB FABRIC.

ADVANCED SIDE SEAM.

RAW EDGE ON SLEEVES.

DROP TAIL.

120 G/M².

100% COTTON.



WH



BK



S • M • L • XL
53/72 55/74 57/76 59/78



100% COTTON



TEAR AWAY LABEL



SCREEN PRINTING



HEAT TRANSFER



EMBROIDERY



50



50



URBAN BEWARE

REF: TSUABEWARE



MEN'S SHORT SLEEVE T-SHIRT.

SLIGHTLY FITTED MEN'S T-SHIRT,

WITH A PLEASANT TOUCH BECAUSE IT IS A COTTON-POLYESTER

BLEND.

145 G/M² APPROX.

60% COTTON / 40% POLYESTER.



OLH



DGH



PUH



BRH



DBH



A/B

S • M • L • XL
49/72 51/74 54/76 56/77



TEAR AWAY LABEL



EMBROIDERY



SCREEN PRINTING



50



HEAT TRANSFER



50

URBAN TANK TOP MAN

REF: TSUATNK



MEN'S TANK TOP T-SHIRT.

1X1 RIB ON COLLAR.

DOUBLE NEEDLE STITCHING IN COLLAR,

SLEEVES AND BOTTOM HEM FOR EXTRA DURABILITY.

SINGLE JERSEY.

150 - 155 G/M² APPROX.

100% PRESHRUNK COTTON.

AS - 98% COTTON / 2% VISCOSE.



WH



AS



BK



RD



NY



100% COTTON



TEAR AWAY LABEL



SCREEN PRINTING



HEAT TRANSFER



EMBROIDERY



50



50



S 48/70

M 51/72

L 53/74

XL 56/76

XXL 58/80





URBAN STRAP

REF: TSUASTRPM



MEN'S TANK TOP T-SHIRT.

SELF-FABRIC COLLAR AND ARMHOLES.

DOUBLE NEEDLE STITCHING IN COLLAR, SLEEVES AND BOTTOM HEM FOR EXTRA DURABILITY. SINGLE JERSEY.

150 - 155 G/M² APPROX.

100% COTTON.

AS: 98% COTTON / 2% VISCOSE.

GM: 85% COTTON / 15% VISCOSE.



WH



AS



GM



BK



SY



CR



RB



NY



100% COTTON



TEAR AWAY LABEL



SCREEN PRINTING



HEAT TRANSFER



EMBROIDERY



50



50



A/B

S 52/66

M 54/68

L 56/70

XL 58/72

XXL 60/74



PAG. 58
REF: TSRKSTRAP



URBAN BEACH UNISEX

REF: TSUALBCH



MEN'S TANK TOP T-SHIRT.

RACER BACK STYLE.

150 - 155 GSM. APPROX.

100% COTTON.

FLUOR: 100% POLYESTER.



Fluor



XS • S • M • L • XL
48/70 50/72 52/74 54/76 56/78



100% COTTON



EMBROIDERY



TEAR AWAY LABEL



50



SCREEN PRINTING



50



HEAT TRANSFER



ARUBA

REF: TSULARB



WOMAN'S TANK TOP T-SHIRT.

1X1RIB.

LADIES RACER BACK STYLE T-SHIRT.

200 G/M².

100% CARDED COTTON.



100% COTTON



EMBROIDERY



TEAR AWAY LABEL



SLIM FIT



SCREEN PRINTING



50



HEAT TRANSFER



50



XS • S • M • L • XL
36/59 38/61 40/63 42/65 44/67



MIKONOS

REF: TSULMKN



WOMAN'S TANK TOP T-SHIRT.

V-NECK.

SINGLE JERSEY.

140 - 145 G/M² APPROX.

100% COTTON.



S • M • L • XL
40/63 42/65 44/67 46/69



100% COTTON



TEAR AWAY LABEL



SCREEN PRINTING



HEAT TRANSFER



EMBROIDERY



SLIM FIT



50



50



SAONA

REF: TSULSAONA



WOMAN'S STRETCHY SPAGHETTI STRAPS.

MODERN FIT.

145 G/M².

92% POLYESTER / 8% SPANDEX.



S • M • L • XL
34/55 39/57 44/57 46/59



TEAR AWAY LABEL



HEAT TRANSFER



EMBROIDERY



SLIM FIT



50



50

new!



MALIA

REF: TSULMALIA



CROP TOP. SELF-FABRIC COLLAR
AND ARMHOLES.

220 G/M².

95% COTTON / 5% ELASTAN



WH



BK



XS • S • M • L • XL
36/37 39/38.5 42/40 46/42 50/44



TEAR AWAY LABEL



EMBROIDERY



SCREEN PRINTING



50



HEAT TRANSFER



50



VICTORIA

REF: TSULVCTR



WOMAN'S SCOOP NECK TANK TOP.

1X1 RIB ON COLLAR.

MODERN FIT.

160 G/M² APPROX.

100% COTTON CARDED.

GM: 85% COTTON / 15% VISCOSE.



100% COTTON



EMBROIDERY



TEAR AWAY LABEL



SLIM FIT



SCREEN PRINTING



50



HEAT TRANSFER



50



S • M • L • XL

30/65 34/67 38/69 42/71

IBIZA

REF: TSULIBIZA



WOMAN'S OVERSIZED TANK TOP.

SINGLE JERSEY.

120 G/M².

100% COTTON.

FLUOR: 100% POLYESTER.



WH



BK



FU



Fluor



SYF



FUF



100% COTTON



TEAR AWAY LABEL



SCREEN PRINTING



HEAT TRANSFER



EMBROIDERY



50



50



S/M • L/XL

54/46 56/48





TOBAGO

REF: TSULTBG



WOMAN'S SHORT SLEEVE T-SHIRT.

LOW NECKLINE.

ROLLED SLEEVES.

SINGLE JERSEY.

140 G/M².

100% COTTON.



S • M • L
49/66 51/68 53/72



WH



BK



CO



MG



100% COTTON



EMBROIDERY



TEAR AWAY LABEL



50



SCREEN PRINTING



50



HEAT TRANSFER

SICILIA

REF: TSULSCL



WOMAN'S SHORT SLEEVE T-SHIRT.

V-NECK.

COLLAR, SLEEVES AND BOTTOM WITH RAW

EDGES. SINGLE JERSEY.

140 G/M² APPROX.

100% COTTON.

AY: 95% COTTON / 5% VISCOSE.



100% COTTON



TEAR AWAY LABEL



SCREEN PRINTING



HEAT TRANSFER



EMBROIDERY



50



50



S 40/64

M 42/66

L 45/68

XL 48/70



WH



AY



BK



MU



TG



RD



CA



FU



PK



TU



RB



MG



PT

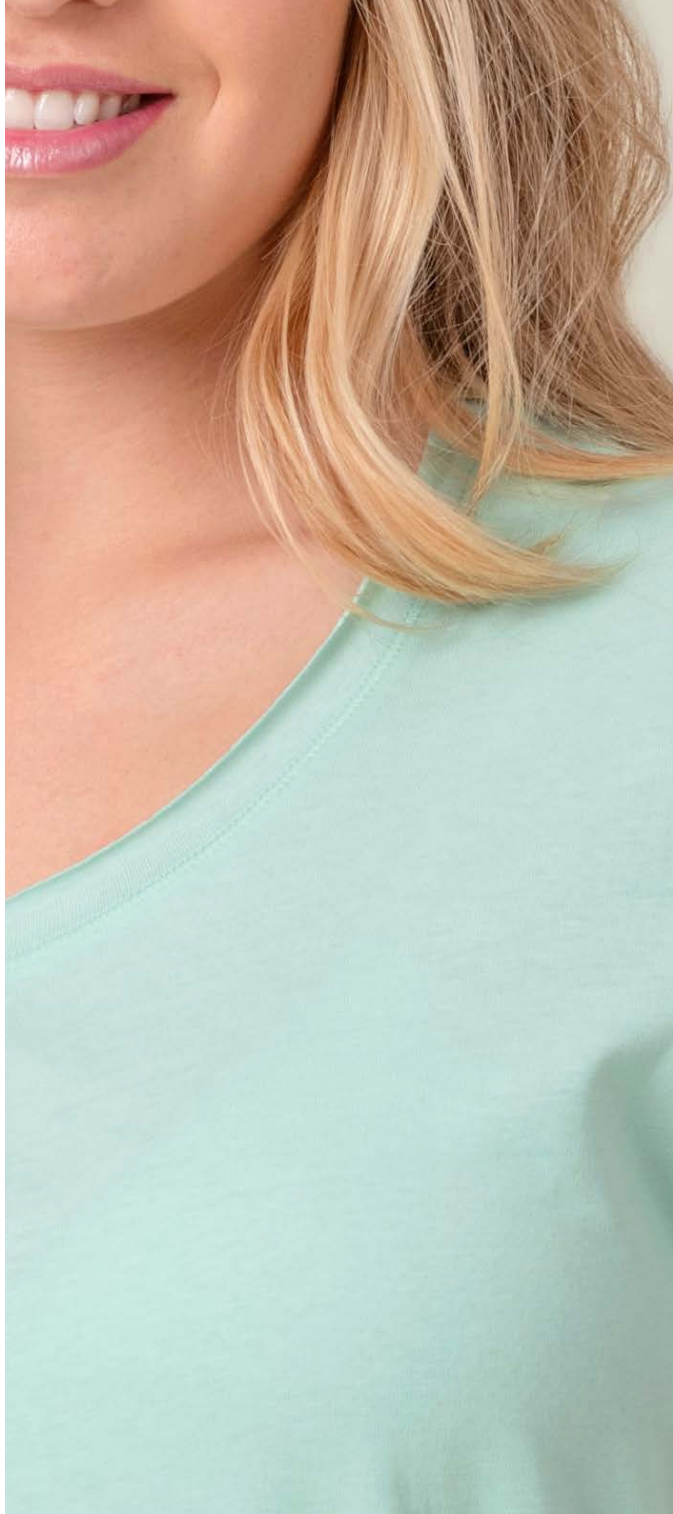


KH



CH





PALMA

REF: TSULPLM



WOMAN'S SHORT SLEEVE T-SHIRT.

COLLAR WITH RAW EDGES.

SINGLE JERSEY.

150 G/M².

100% COTTON.

AY: 95% COTTON / 5% VISCOSE.



S • M • L • XL
48/66 50/68 52/70 54/72



WH



AY



ZC



BK



MU



AL



AQ



DN



NY



MG



KH



SA



100% COTTON



EMBROIDERY



TEAR AWAY LABEL



50



SCREEN PRINTING



50



HEAT TRANSFER



CAPRI

REF: TSULCPR



WOMAN'S RAGLAN SLEEVE T-SHIRT.

SCOOP NECK.

ROLLED SELF-FABRIC COLLAR.

POCKET ON THE LEFT SIDE.

120 G/M².

100% COTTON.



S/M • L/XL

44/70 47/72



WH



BK



VAP



SKP

Pastel



100% COTTON



EMBROIDERY



TEAR AWAY LABEL



50



SCREEN PRINTING



50



HEAT TRANSFER

TENERIFE

REF: TSULTNRF



WOMAN'S OVERSIZE SHORT SLEEVE T-SHIRT.

SLUB FABRIC.

V-NECK.

120 G/M² APPROX.

100% COTTON SLUB.



S/M • L/XL
64/66 67/68



WH



BK

Pastel



ORP



PKP



SKP



100% COTTON



TEAR AWAY LABEL



SCREEN PRINTING



HEAT TRANSFER



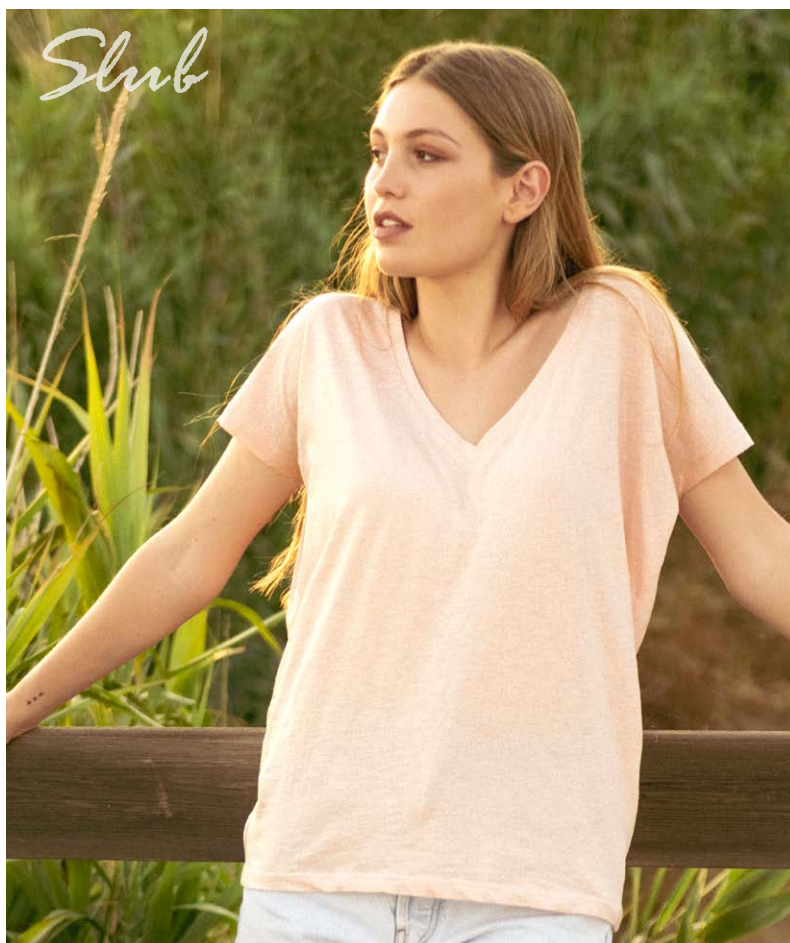
EMBROIDERY



50



50



Slub



CURVES SLUB

REF: CURVSSLUB



WOMAN'S SHORT SLEEVE T-SHIRT.

SLUB FABRIC.

1X1 RIBBED V-NECK COLLAR.

BELL SHAPED.

UNFINISHED SLEEVE AND BOTTOM.

120 G/M².

100% SLUB COTTON.



S • M • L • XL
47/68 52/69 56/72 60/74



WH



BK



100% COTTON



TEAR AWAY LABEL



SCREEN PRINTING



HEAT TRANSFER



EMBROIDERY



100



100

MALDIVAS

REF: TSULMLDV



WOMAN'S 3/4 SLEEVE T-SHIRT.

LOW NECKLINE.

3/4 LENGTH RAGLAN SLEEVE.

SINGLE JERSEY.

120 G/M².

50% COTTON / 50% VISCOSE.



S/M • L/XL

64/63 66/65



WH

BK

TG

WR

FU

TU

DN

Neon



LYN

ORN

PKN

SKN



TEAR AWAY LABEL



SCREEN PRINTING



HEAT TRANSFER



EMBROIDERY



50



50



PAPUA

REF: TSULPAPLS



WOMAN'S LONG SLEEVE T-SHIRT.

V-NECK.

SLEEVES AND HEM WITH RAW EDGES.

SINGLE JERSEY.

120 G/M².

50% COTTON / 50% VISCOSE.



S/M • L/XL

43/65 46/67



WH

BK

RP

AQ

Pastel



VAP

ORP



TEAR AWAY LABEL



SCREEN PRINTING



HEAT TRANSFER



EMBROIDERY



50



50





URBAN SEA KID

REF: TSUKSEA



KID'S SHORT SLEEVE T-SHIRT.

DECORATIVE CHAIN STITCHES ON COLLAR,
SLEEVES AND HEM. SLEEVES AND HEM WITH RAW
EDGES. SIDE VENTS.

155 G/M².

100% COTTON



WH



1/2 • 3/4 • 5/6 • 7/8 • 9/11 • 12/14
29/40 32/44 35/49 38/52 41/58 43/61



100% COTTON



EMBROIDERY



TEAR AWAY LABEL



50



SCREEN PRINTING



50



HEAT TRANSFER

URBAN BASEBALL KID

REF: TSUKBSB



KID'S SHORT SLEEVE T-SHIRT.

CONTRAST COLOR SET-IN COLLAR
AND RAGLAN SLEEVE.

SIDE-SEAMED.

155 G/M².

100% PRESHRUNK COTTON.

GM: 85% COTTON / 15% VISCOSE.



100% COTTON



TEAR AWAY LABEL



SCREEN PRINTING



HEAT TRANSFER



EMBROIDERY



50



50



WH/BK



WH/GM



WH/NY



WH/RO



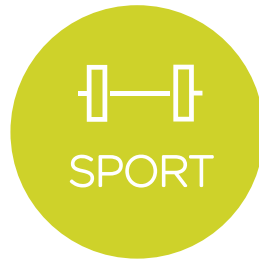
WH/RB



1/2	•	3/4	•	5/6	•	7/8	•	9/11	•	12/14
28/40		32/44		36/47		39/50		43/54		44/63







SPORT LINE

Why don't we start by
looking after ourselves?

Live it!





SPORT T-SHIRTS



SHORT SLEEVE T-SHIRT.

RAGLAN SLEEVE.

MEN AND KID: DECORATIVE SEAMS IN THE SLEEVES.

LADY: DECORATIVE SEAMS IN FRONT, BACK AND SLEEVES.

SLIGHTLY FITTED.

130 G/M² APPROX.

100% POLYESTER.



TEAR AWAY LABEL



SCREEN PRINTING



HEAT TRANSFER



SUBLIMATION



EMBROIDERY



100



100

KIDS



50



REF: SPORTMAN



S • M • L • XL • XXL • 3XL
50/68 52/70 54/72 56/74 58/79 60/81



WH



GF



BK



SY



OR



RD



TU



RB



NY



LM



KH



SYF



ORF



FUF



LMF

Fluor

REF: SPORTLADY



S • M • L • XL • XXL
41/60 43/62 45/64 47/66 49/68



WH



BK



OR



RD



TU



RB



NY



KH



SYF



ORF

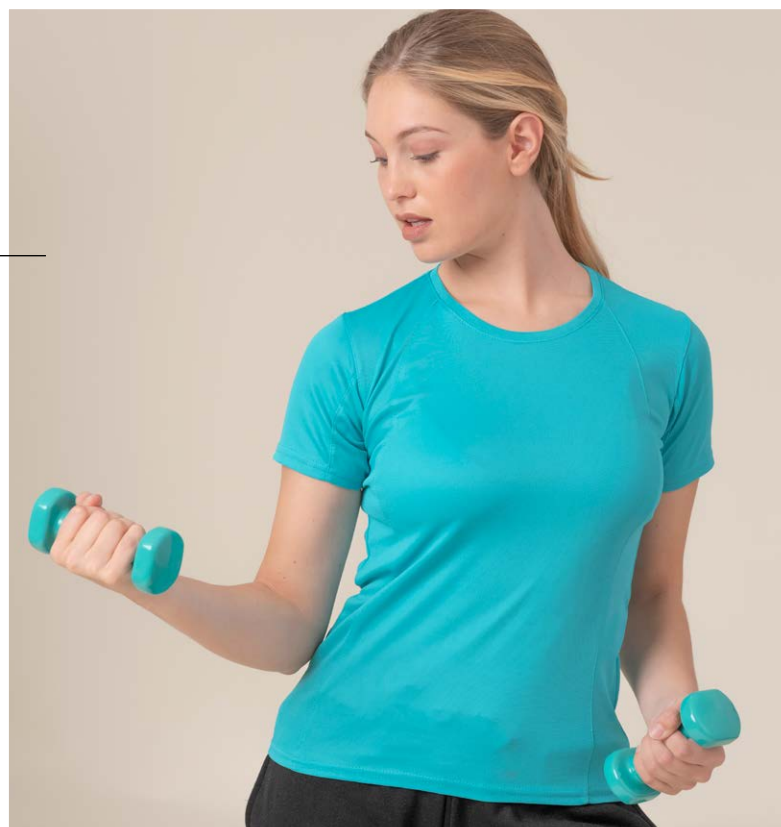


FUF



LMF

Fluor



REF: SPORTKID



3/4 • 5/6 • 7/8 • 9/11 • 12/14
32/45 36/47 39/50 43/54 44/63



WH



BK



RD



RB



NY



SYF



ORF



FUF



LMF

Fluor



ARUBA T-SHIRTS

POSSIBILITY
OF
DRYING
180°



TANK TOP.

RACERBACK.

130 G/M² APPROX.

100% POLYESTER.



TEAR AWAY LABEL



SCREEN PRINTING



HEAT TRANSFER



SUBLIMATION



EMBROIDERY



50



50

SLIGHTLY
FITTED



MAN

REF: SPORTARBM



A/B

S • M • L • XL • XXL
49/66 51/68 53/70 55/72 57/74



WH



BK



RD



RB



SYF



FUF

Fluor



LADY

REF: SPORTARBL



A/B

S • M • L • XL • XXL
38/61 40/63 42/65 44/67 46/69



WH



BK



RD



RB



SYF



FUF

Fluor



SPORT PIQUE POLO



SHORT SLEEVE POLO.

PIQUÉ FABRIC. NECK TAPE IN CONTRASTING COLOUR.

MEN AND LADY: THREE-BUTTON PLACKET WITH
BOTTOM BOX-STITCH REINFORCEMENT.

LADY: SLIGHTLY FITTED.

KID: TWO-BUTTON PLACKET WITH
BOTTOM BOX-STITCH REINFORCEMENT.

CONTRASTING SIDE SLITS.

150 - 160 G/M² APPROX.

100% POLYESTER.

POSSIBILITY
OF
DRYING
180°



TEAR AWAY LABEL



SCREEN PRINTING



HEAT TRANSFER



SUBLIMATION



EMBROIDERY



50



50



REF: SPORTPIQUE



S • M • L • XL • XXL
52/70 54/72 56/74 58/76 60/78



WH



BK



OR



RD



RB



AQ



NY

REF: SPORTPQLADY



S • M • L • XL • XXL • 3XL
42/61 44/63 46/65 48/67 50/69 54/73



WH



BK



RD



RB



AQ



NY



FUF

Fluor



REF: SPORTPQKID



3/4 • 5/6 • 7/8 • 9/11 • 12/14
33/42 37/46 39/51 42/57 44/64



WH



RD



RB



NY

SPORT HEAVY PIQUE POLO

POSSIBILITY
OF
DRYING
180°



SHORT SLEEVE POLO. PIQUÉ FABRIC.

THREE-BUTTON PLACKET WITH BOTTOM BOX-STITCH
REINFORCEMENT.

NECK TAPE IN CONTRASTING COLOUR.

CONTRASTING SIDE SLITS.

LADY: SLIGHTLY FITTED.

200 - 210 G/M² APPROX.

100% POLYESTER.



TEAR AWAY LABEL



SCREEN PRINTING



HEAT TRANSFER



SUBLIMATION



EMBROIDERY



50



50





REF: SPHEAVYLDY

LADY



S • M • L • XL • XXL • 3XL
42/61 44/63 46/65 48/67 50/69 54/73



WH/WH



SL/GRA



CHC/RD



BK/SL



RD/NY



RB/SL



NY/SL



REF: SPHEAVYMEN

MAN



S • M • L • XL • XXL
52/70 54/72 56/74 58/76 60/78



WH/WH



SL/GRA



CHC/RD



BK/SL



RD/NY



RB/SL



NY/SL



SPORT REGULAR MAN T-SHIRT

REF: SPORTRGLM



HIGH PERFORMANCE MEN'S SPORTS T-SHIRT.

INTERLOCK FABRIC.

SILK TOUCH.

140 G/M² APPROX.

100% POLYESTER.



S • M • L • XL • XXL
44/70 48/72 52/73 56/76 59/79



Fluor



TEAR AWAY LABEL



SCREEN PRINTING



HEAT TRANSFER



SUBLIMATION



EMBROIDERY



50



50

SPORT MAN CONTRAST

REF: SPORTCTRM



MEN'S CONTRAST RAGLAN SLEEVES.

DECORATIVE STITCHING ON SLEEVES.

130 G/M².

100% POLYESTER.



WH/BK



WH/RD



WH/RB



WH/NY



S • M • L • XL • XXL • 3XL
50/68 52/70 54/72 56/74 58/79 60/81



TEAR AWAY LABEL



SCREEN PRINTING



HEAT TRANSFER



SUBLIMATION



EMBROIDERY



50



50

SPORT MAN LS T-SHIRT

REF: SPORTMANLS



MEN'S LONG SLEEVE T-SHIRT.

RAGLAN SLEEVES.

DECORATIVE STITCH ON THE NECK, SHOULDERS
AND SLEEVES.

130 G/M² APPROX.

100% POLYESTER.



S • M • L • XL • XXL
50/68 52/70 54/72 56/74 58/79



Fluor



TEAR AWAY LABEL



SCREEN PRINTING



HEAT TRANSFER



SUBLIMATION



EMBROIDERY



50



50



LEGGINGS LADY

REF: SPLEGGINS



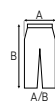
LADY'S LEGGINGS.

STRETCH LEGGING WITH ELASTIC WAISTBAND.

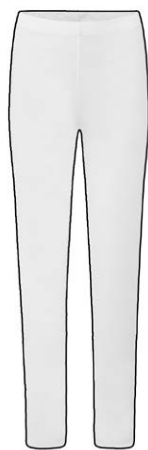
180 G/M².

65% POLYESTER / 30% COTTON / 5% SPANDEX.

GM: 82% COTTON / 13% VISCOSA / 5% SPANDEX.



XS	•	S	•	M	•	L	•	XL
30/90		32/92		34/94		36/96		38/98



WH



GM



BK



TEAR AWAY LABEL



SCREEN PRINTING



HEAT TRANSFER



SUBLIMATION



EMBROIDERY



50



50







UNDER WEAR LINE

From the inside to
the outside, it is like
projecting our well-being
and our comfort.

Feel it!





BOXER BRIEFS

REF: UNBOXER

MAN UNDERWEAR SHORT BOXER.

SIDE-SEAMED.

ELASTIC BAND IN WAISTBAND WITH JHK LOGO.

160 G/M².

WH-BK: 95% COTTON / 5% ELASTANE.

GM: 85% COTTON / 10% VISCOSE / 5% ELASTANE.

ELASTIC: 53% NYLON / 20% POLYESTER / 27% SPANDEX.



TEAR AWAY LABEL



EMBROIDERY



3



25



WH



GM



BK



A/B

XS • S • M • L • XL • XXL

30/24.5

33/26

36/27.5

39/29

42/30.5

45/32



MIDWAY BRIEFS

REF: UNMIDWAY

MAN UNDERWEAR MIDWAY BRIEFS.

SIDE-SEAMED.

ELASTIC BAND IN WAISTBAND WITH JHK LOGO.

160 G/M².

WH-BK: 95% COTTON / 5% ELASTANE.

GM: 85% COTTON / 10% VISCOSE / 5% ELASTANE.

ELASTIC: 53% NYLON / 20% POLYESTER / 27% SPANDEX.



TEAR AWAY LABEL



EMBROIDERY



3



25



WH



GM



BK



A/B

XS • S • M • L • XL • XXL

28/29

32/30

36/31

40/32

44/33

48/34



THONG

REF: UNTHONG

LADY THONG. SIDE-SEAMED.

ELASTIC BAND IN WAISTBAND WITH JHK LOGO.

160 G/M².

WH-BK: 95% COTTON / 5% ELASTANE.

GM: 85% COTTON / 10% VISCOSE / 5% ELASTANE.

ELASTIC: 53% NYLON / 20% POLYESTER/ 27% SPANDEX.



WH



GM



BK



XS	•	S	•	M	•	L	•	XL	•	XXL
34/27		36/28		38/29		40/30		42/31		44/32



TEAR AWAY LABEL



EMBROIDERY



3



25



BRIEFS

REF: UNBRIEFS

LADY BRIEFS. SIDE-SEAMED.

ELASTIC BAND IN WAISTBAND WITH JHK LOGO.

160 G/M².

WH-BK: 95% COTTON / 5% ELASTANE.

GM: 85% COTTON / 10% VISCOSE / 5% ELASTANE.

ELASTIC: 53% NYLON / 20% POLYESTER/ 27% SPANDEX.



WH



GM



BK



XS	•	S	•	M	•	L	•	XL	•	XXL
32/22		34/23		36/24		38/25		40/26		42/27



ETIQUETA REMOVIBLE



BORDADO



3



25



SPECIAL

Edition

WE DESIGN, WE PERSONALISE AND WE PRODUCE.

Industrial

WE PROVIDE UNIFORMS FOR YOUR COMPANY.

At **JHK**, we offer your company a wide range of garments for your clients' work uniform needs.



Souvenir

WE CREATE PERSONALISED GARMENTS.

Personalise your T-shirt, your sweatshirt, a polo, a shirt, and even trousers, **JHK** makes it easy so your design or brand is highly visible and high quality.

Send us your design and we will get to work.

Fashion

WE MANUFACTURE YOUR CLOTHING BRAND.

Our pattern-making department can create your clothes professionally, because **JHK** works on every process from start to finish, from designing personalised collections to manufacturing each garment.



When do we start?...

Colores/Colors



Washed Colors



AG Amazonia Green



CR Canary Red



LS Lime Stone

Pastel



ORP Orange Pastel



PKP Pink Pastel



SKP Sky Blue Pastel



VAP Vanilla Pastel



GRP Green Pastel

Neon Colors



SKN Sky Neon



ORN Orange Neon



PKN Pink Neon



LYN Light Yellow Neon

Slub



SKN Sky Neon



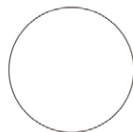
ORN Orange Neon



PKN Pink Neon



LYN Light Yellow Neon



WH White



BK Black



MG Mint Green

Fluor



LMF Lime Fluor



FUF Fuchsia Fluor

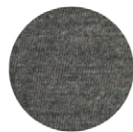


ORF Orange Fluor



SYF Gold Fluor

Heather Colors



CHCH Charcoal Heather



MUH Mustard Heather



BUH Burgundy Heather



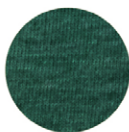
LVH Lavender Heather



TUH Turquoise Heather



DNH Denim Heather



BGH Bottle Green Heather

Heather Beware



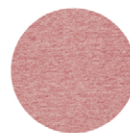
OLH Olive Heather



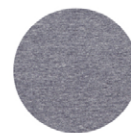
DGH Dark Grey Heather



PUH Purple Heather

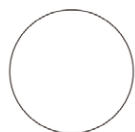


BRH Brick Red Heather



DBH Dark Blue Heather

Cotton



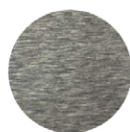
WH White



AS Ash Melange



AY Ash Grey



GM Grey Melange



ZC Zinc



GF Graphite



BK Black



LY Light Yellow



WR Warm Red



BC Brick



OR Orange



CO Coral



TG Tangerine



PH Peach



MU Mustard



SY Gold



RD Red



BU Burgundy



CA Cardinal



RP Raspberry



FU Fuchsia



AL Azalea



PK Pink



LV Lavender



DN Denim



SB Steel Blue



RB Royal Blue



AQ Aqua



AZ Azure



TU Turquoise



SK Sky Blue



PU Purple



NY Navy



IB Ice Blue



PG Pale Green



MG Mint Green



KG Kelly Green



LM Lime



PT Pistachio



BG Bottle Green



CH Chocolate



BR Brown



WA Walnut



SA Sand



AR Army



KH Khaki

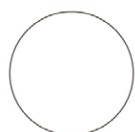


CM Camouflage



FG Forest Green

Polyester



WH White



GF Graphite



BK Black



OR Orange



RD Red



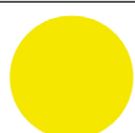
TU Turquoise



AQ Aqua



RB Royal Blue



SYF Gold Fluor



ORF Orange Fluor



FUF Fuchsia Fluor



LMF Lime Fluor



KH Khaki



LM Lime



SY Gold



NY Navy

The product features are described in good faith, not with standing human error or omission. **JHK** reserves the right to make changes to its products without notification. This data is for informational purposes only. It does not represent a sales contract. The returns of garments already printed, embroidered, etc, will not be accepted.

JHK
T-SHIRT



STANDARD
100



www.jhktshirt.com